

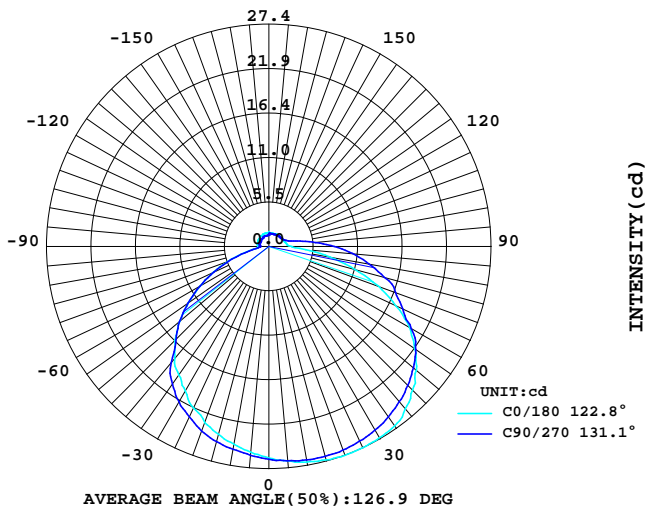
LUMINAIRE PHOTOMETRIC TEST REPORT

Report number:

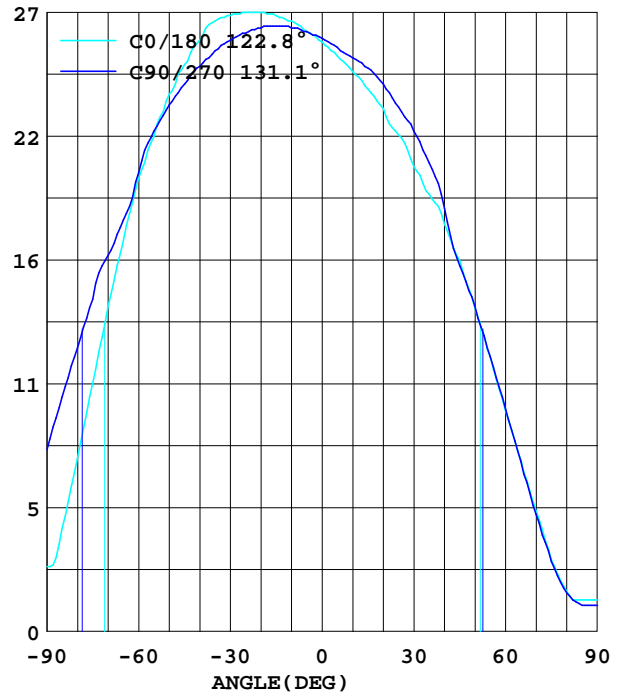
MANUFACTURER:			
Address:			
NAME: 46-RS-5050-24-60-12-X-Y R		TYPE: LED Strip	WEIGHT:
SPECIFICATION: 5050 60D	CCT(K): 0	DIMENSION: 1M*0.012M	SERIAL No.: 20211129017

DATA OF LAMP		Imax(cd)	27.41	S/MH(C0/180)	1.57
MODEL	5050	EFFICIENCY(%)	100.0	S/MH(C90/270)	1.49
NOMINAL POWER(W)	4	TOTAL FLUX(lm)	102.72	Voltage(V)	24.00
RATED VOLTAGE(V)	24	EFFICIENCY(lm/W)	26.2	Current(A)	0.163
NOMINAL FLUX(lm)	102.7	h up(%)	10.9	Power(W)	3.920
LAMPS QUANTITY	1	h down(%)	89.1	Power Factor(PF)	1.000
TEST VOLTAGE(V)	24.0	Effective Flux(lm)	91.9	EEL	0.303

LUMINOUS INTENSITY DISTRIBUTION



LUMINOUS INTENSITY DISTRIBUTION



Test System:HOPOO HPG1800
 Temperature:25.3DEG
 Operators:
 Test Date:2021年11月29日

Test Set: 8.0deg/s C-Gamma (TYPE C)
 Humidity:65.0%
 Test Distance:8.800 m
 Remarks:

Color Temperature Data List

Report number:

MANUFACTURER:			
Address:			
NAME: 46-RS-5050-24-60-12-X-Y R		TYPE: LED Strip	WEIGHT:
SPECIFICATION: 5050 60D	CCT(K): 0	DIMENSION: 1M*0.012M	SERIAL No.: 20211129017

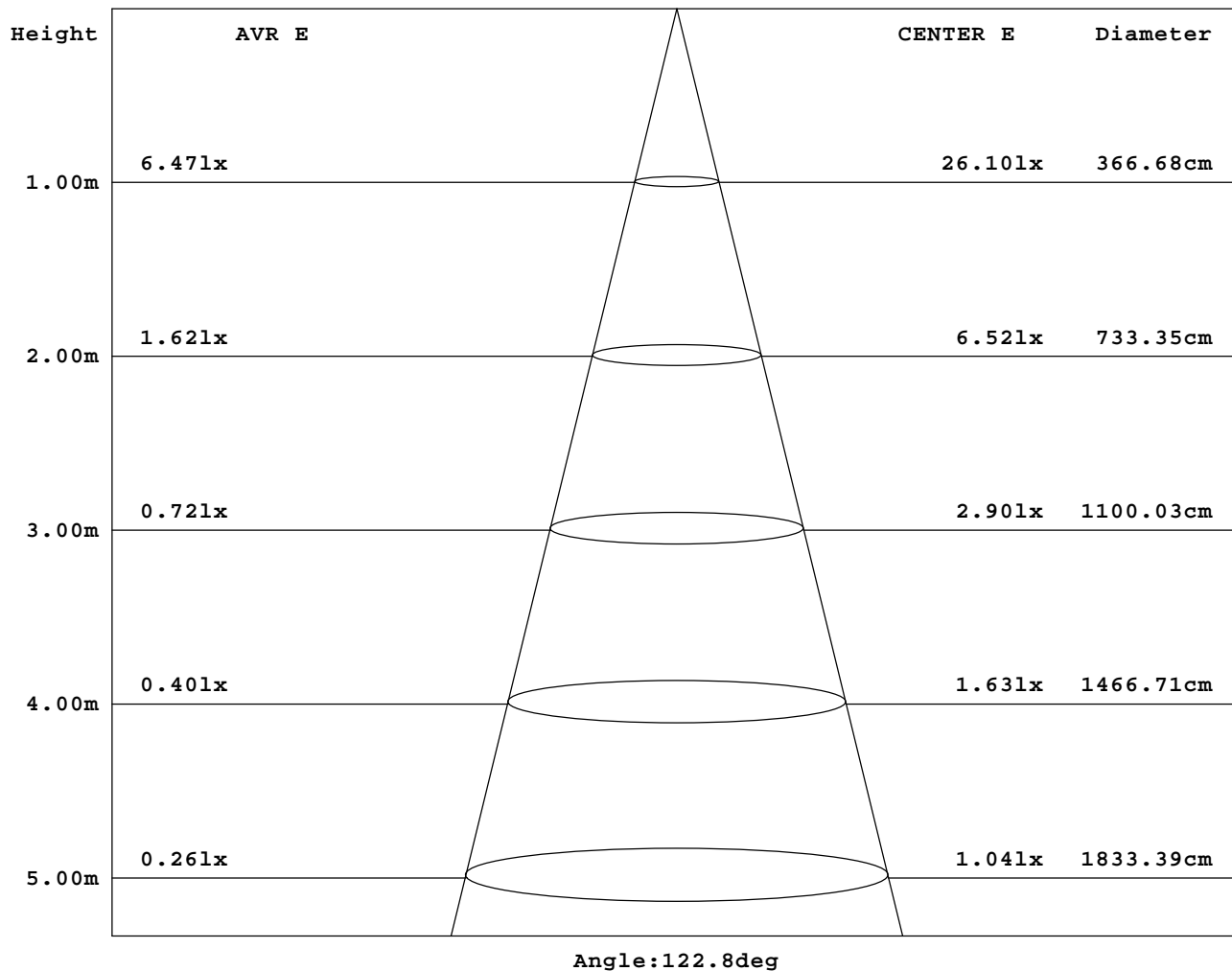
Test System:HOPOO HPG1800
Temperature:25.3DEG
Operators:
Test Date:2021年11月29日

Test Set: 8.0deg/s C-Gamma (TYPE C)
Humidity:65.0%
Test Distance:8.800 m
Remarks:

AVERAGE AND CENTER E Figure

Report number:

MANUFACTURER:			
Address:			
NAME: 46-RS-5050-24-60-12-X-Y R		TYPE: LED Strip	WEIGHT:
SPECIFICATION: 5050 60D	CCT(K): 0	DIMENSION: 1M*0.012M	SERIAL No.: 20211129017



Test System: HOPOO HPG1800
 Temperature: 25.3DEG
 Operators:
 Test Date: 2021年11月29日

Test Set: 8.0deg/s C-Gamma (TYPE C)
 Humidity: 65.0%
 Test Distance: 8.800 m
 Remarks:

GONIOPHOTOMETERS SYSTEM TEST REPORT

ZONAL FLUX DIAGRAM

Report number:

MANUFACTURER:			
Address:			
NAME: 46-RS-5050-24-60-12-X-Y R		TYPE: LED Strip	WEIGHT:
SPECIFICATION: 5050 60D	CCT(K): 0	DIMENSION: 1M*0.012M	SERIAL No.: 20211129017

g	C0	C45	C90	C135	C180	C225	C270	C315	g	4one	tBtal
5.0	26.56	26.79	26.56	27.02	25.47	26.32	25.86	26.94	0- 5	0.633	0.633
10.0	27.02	26.87	26.71	26.87	24.78	25.86	25.40	26.71	5- 10	1.886	2.519
15.0	27.25	26.79	26.79	26.48	24.00	25.24	24.93	26.32	10- 15	3.101	5.620
20.0	27.41	26.63	26.71	26.09	23.15	24.47	24.23	25.63	15- 20	4.247	9.868
25.0	27.41	26.25	26.48	25.55	21.99	23.54	23.23	24.78	20- 25	5.287	15.15
30.0	27.25	25.78	26.17	24.78	20.59	22.38	22.14	23.61	25- 30	6.204	21.36
35.0	27.02	25.09	25.71	24.00	19.36	21.06	20.75	22.22	30- 35	6.959	28.32
40.0	26.17	24.31	25.01	22.99	18.04	19.51	18.74	20.28	35- 40	7.533	35.85
45.0	25.09	23.23	24.23	21.91	16.41	17.81	16.18	17.34	40- 45	7.800	43.65
50.0	23.77	22.07	23.30	20.67	14.32	15.64	14.40	14.55	45- 50	7.841	51.49
55.0	21.91	20.52	22.14	19.28	12.15	12.70	12.15	12.08	50- 55	7.655	59.15
60.0	20.05	18.81	20.28	17.73	9.757	10.14	9.834	10.22	55- 60	7.225	66.37
65.0	17.26	15.95	18.19	16.03	7.589	8.286	7.511	7.356	60- 65	6.513	72.89
70.0	14.40	13.24	16.64	13.39	5.343	5.885	5.188	5.265	65- 70	5.617	78.50
75.0	10.99	10.99	14.71	11.07	3.175	4.336	3.097	3.329	70- 75	4.611	83.12
80.0	7.666	8.440	12.54	9.215	1.781	2.865	1.703	2.245	75- 80	3.604	86.72
85.0	4.568	5.962	10.37	7.279	1.393	2.245	1.161	2.090	80- 85	2.751	89.47
90.0	2.865	4.026	8.053	5.111	1.393	2.090	1.161	2.013	85- 90	2.088	91.56
95.0	2.323	2.168	5.808	3.484	1.393	2.013	1.161	1.936	90- 95	1.600	93.16
100.0	2.168	1.239	3.949	2.168	1.471	1.936	1.161	1.858	95-100	1.220	94.38
105.0	2.090	1.239	2.710	1.471	1.471	1.858	1.239	1.858	100-105	0.992	95.37
110.0	2.013	1.239	2.245	1.239	1.471	1.858	1.239	1.781	105-110	0.879	96.25
115.0	1.936	1.239	2.013	1.239	1.471	1.781	1.239	1.781	110-115	0.816	97.07
120.0	1.936	1.239	1.936	1.239	1.548	1.781	1.239	1.703	115-120	0.770	97.84
125.0	1.858	1.239	1.858	1.239	1.548	1.703	1.239	1.703	120-125	0.723	98.56
130.0	1.858	1.316	1.781	1.239	1.548	1.703	1.316	1.703	125-130	0.678	99.24
135.0	1.781	1.316	1.781	1.239	1.626	1.703	1.316	1.626	130-135	0.629	99.87
140.0	1.781	1.316	1.781	1.239	1.626	1.703	1.316	1.626	135-140	0.574	100.4
145.0	1.781	1.316	1.703	1.316	1.626	1.703	1.316	1.626	140-145	0.515	100.9
150.0	1.781	1.393	1.703	1.316	1.626	1.703	1.393	1.626	145-150	0.459	101.4
155.0	1.703	1.393	1.626	1.316	1.703	1.626	1.393	1.626	150-155	0.394	101.8
160.0	1.703	1.393	1.626	1.316	1.703	1.626	1.393	1.626	155-160	0.325	102.1
165.0	1.703	1.393	1.626	1.316	1.703	1.626	1.393	1.548	160-165	0.255	102.3
170.0	1.703	1.393	1.626	1.393	1.703	1.626	1.393	1.548	165-170	0.183	102.5
175.0	1.703	1.393	1.626	1.393	1.703	1.626	1.393	1.548	170-175	0.111	102.6
180.0	1.703	1.471	1.626	1.393	1.858	1.548	1.393	1.548	175-180	0.037	102.7
DEG	LUMINOUS INTENSITY:cd									UNIT:lm	

Test System:HOPOO HPG1800
Temperature:25.3DEG
Operators:
Test Date:2021年11月29日

Test Set: 8.0deg/s C-Gamma (TYPE C)
Humidity:65.0%
Test Distance:8.800 m
Remarks:

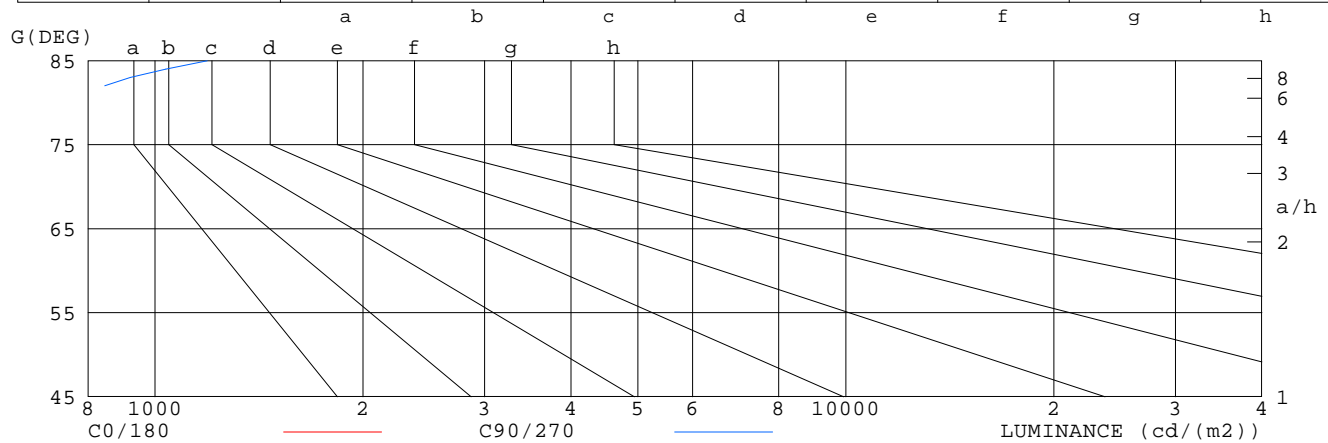
LUMINANCE LIMITATION CURVES

Report number:

MANUFACTURER:			
Address:			
NAME: 46-RS-5050-24-60-12-X-Y R		TYPE: LED Strip	WEIGHT:
SPECIFICATION: 5050 60D	CCT(K): 0	DIMENSION: 1M*0.012M	SERIAL No.: 20211129017

LUMINANCE LIMITATION CURVES

GLARE	CLASS	ILLUMINANCE (lx)							
1.15	A	2000	1000	500	<=300				
1.50	B		2000	1000	500	<=300			
1.85	C			2000	1000	500	<=300		
2.20	D				2000	1000	500	<=300	
2.55	E					2000	1000	500	<=300



LUMINANCE cd/m²		
G(°)	C0/180	C90/270
85	524	1191
80	441	722
75	425	568
70	421	487
65	409	431
60	401	406
55	382	386
50	370	363
45	355	343

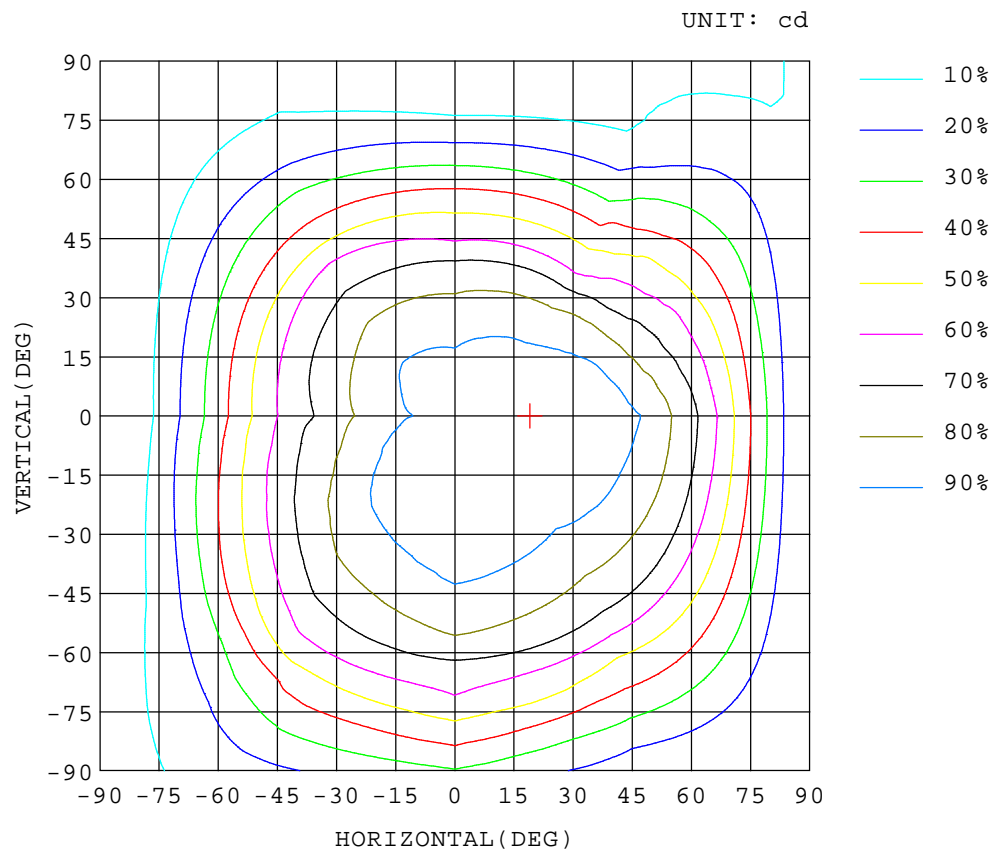
Test System: HOPOO HPG1800
 Temperature: 25.3 DEG
 Operators:
 Test Date: 2021年11月29日

Test Set: 8.0deg/s C-Gamma (TYPE C)
 Humidity: 65.0%
 Test Distance: 8.800 m
 Remarks:

ISOCANDELA DIAGRAM

Report number:

MANUFACTURER:			
Address:			
NAME: 46-RS-5050-24-60-12-X-Y R		TYPE: LED Strip	WEIGHT:
SPECIFICATION: 5050 60D	CCT(K): 0	DIMENSION: 1M*0.012M	SERIAL No.: 20211129017



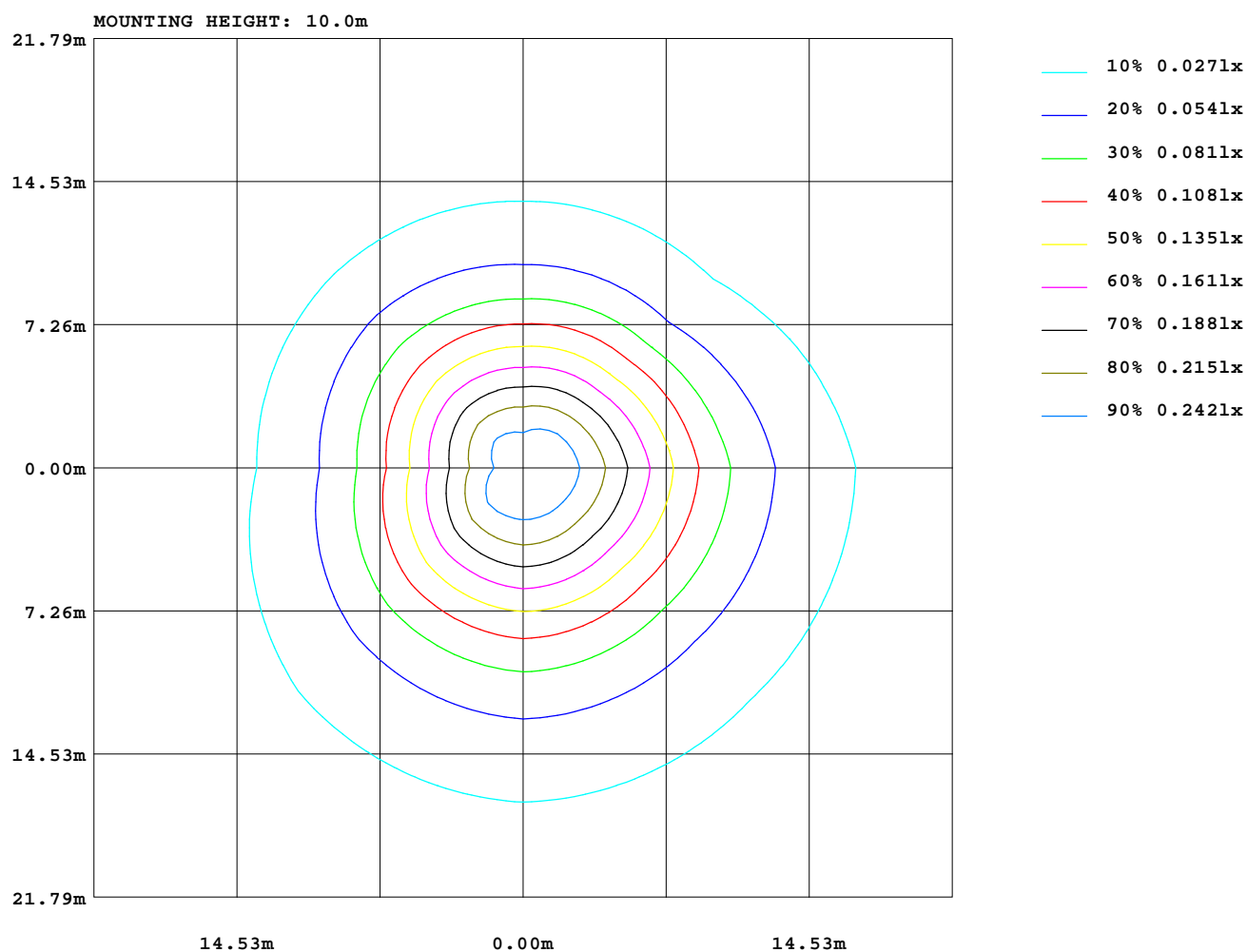
Test System: HOPOO HPG1800
Temperature: 25.3 DEG
Operators:
Test Date: 2021年11月29日

Test Set: 8.0deg/s C-Gamma (TYPE C)
Humidity: 65.0%
Test Distance: 8.800 m
Remarks:

ISOLUX DIAGRAM

Report number:

MANUFACTURER:			
Address:			
NAME: 46-RS-5050-24-60-12-X-Y R		TYPE: LED Strip	WEIGHT:
SPECIFICATION: 5050 60D	CCT(K): 0	DIMENSION: 1M*0.012M	SERIAL No.: 20211129017



Test System: HOPOO HPG1800
Temperature: 25.3DEG
Operators:
Test Date: 2021年11月29日

Test Set: 8.0deg/s C-Gamma (TYPE C)
Humidity: 65.0%
Test Distance: 8.800 m
Remarks:

GONIOPHOTOMETERS SYSTEM TEST REPORT

AREA LUMINOUS FLUX

Report number:

MANUFACTURER:									
Address:									
NAME: 46-RS-5050-24-60-12-X-Y R					TYPE: LED Strip				
SPECIFICATION: 5050 60D			CCT(K): 0			DIMENSION: 1M*0.012M			SERIAL No.: 20211129017

		AREA FLUX DIAGRAM																UNIT:lm		Φ t	Φ a
		0.00	0.01	0.02	0.03	0.05	0.05	0.05	0.05	0.04	0.04	0.05	0.05	0.05	0.05	0.04	0.03	0.02	0.01	0.64	0.01
VERTICAL(°)	90																				
	80	0.00	0.01	0.02	0.03	0.05	0.05	0.05	0.05	0.04	0.04	0.05	0.05	0.05	0.05	0.04	0.03	0.02	0.01	0.64	0.01
	70	0.00	0.01	0.02	0.04	0.07	0.08	0.09	0.10	0.10	0.10	0.09	0.08	0.07	0.06	0.06	0.05	0.03	0.01	1.05	0.73
	60	0.00	0.01	0.03	0.07	0.11	0.15	0.19	0.21	0.23	0.23	0.21	0.18	0.13	0.10	0.09	0.06	0.03	0.01	2.04	2.00
	50	0.00	0.02	0.04	0.10	0.16	0.23	0.30	0.34	0.37	0.37	0.34	0.29	0.22	0.18	0.14	0.09	0.04	0.01	3.23	3.21
	40	0.00	0.02	0.06	0.13	0.22	0.32	0.42	0.47	0.50	0.49	0.46	0.40	0.32	0.26	0.19	0.12	0.05	0.01	4.44	4.43
	30	0.00	0.02	0.07	0.16	0.27	0.41	0.51	0.59	0.62	0.63	0.60	0.52	0.42	0.34	0.25	0.15	0.06	0.01	5.64	5.62
		0.00	0.02	0.09	0.19	0.32	0.46	0.58	0.66	0.70	0.71	0.69	0.62	0.53	0.41	0.29	0.17	0.07	0.01	6.52	6.51
		0.00	0.03	0.09	0.20	0.34	0.48	0.61	0.71	0.75	0.77	0.75	0.69	0.60	0.47	0.34	0.20	0.08	0.01	7.13	7.12
		0.00	0.03	0.10	0.21	0.35	0.49	0.61	0.72	0.78	0.80	0.79	0.74	0.65	0.52	0.37	0.22	0.09	0.01	7.47	7.46
		0.00	0.03	0.10	0.22	0.36	0.50	0.62	0.73	0.80	0.81	0.80	0.75	0.66	0.53	0.38	0.22	0.09	0.01	7.63	7.62
		0.00	0.03	0.11	0.23	0.38	0.52	0.65	0.76	0.81	0.81	0.78	0.73	0.64	0.52	0.37	0.22	0.09	0.01	7.64	7.63
	-30	0.00	0.03	0.11	0.23	0.38	0.52	0.65	0.74	0.79	0.80	0.76	0.70	0.61	0.49	0.35	0.20	0.08	0.01	7.47	7.46
	-40	0.01	0.03	0.11	0.23	0.37	0.51	0.63	0.71	0.77	0.77	0.73	0.66	0.57	0.45	0.32	0.18	0.07	0.01	7.13	7.12
	-50	0.01	0.03	0.10	0.21	0.34	0.48	0.59	0.67	0.72	0.73	0.69	0.61	0.52	0.41	0.28	0.16	0.07	0.01	6.61	6.60
	-60	0.01	0.03	0.09	0.18	0.31	0.43	0.52	0.60	0.65	0.66	0.62	0.54	0.44	0.33	0.23	0.13	0.06	0.01	5.85	5.84
-70	0.01	0.03	0.07	0.15	0.25	0.35	0.44	0.50	0.54	0.54	0.50	0.43	0.35	0.26	0.18	0.11	0.05	0.01	4.76	4.76	
-80	0.01	0.03	0.06	0.12	0.20	0.27	0.33	0.39	0.43	0.43	0.39	0.33	0.26	0.19	0.13	0.08	0.03	0.01	3.69	3.68	
-90	0.01	0.02	0.05	0.09	0.14	0.19	0.23	0.27	0.30	0.30	0.26	0.21	0.16	0.12	0.08	0.05	0.03	0.01	2.53	2.52	
		-90	-80	-70	-60	-50	-40	-30	-20	HORIZONTAL(°)				20	30	40	50	60	70	80	90
Φ t	0.08	0.44	1.34	2.79	4.61	6.44	8.01	9.22	9.92	10.0	9.49	8.52	7.19	5.67	4.09	2.44	1.04	0.20	103		
Φ a	0.00	0.31	1.26	2.72	4.55	6.37	7.94	9.16	9.85	9.93	9.42	8.44	7.11	5.60	4.04	2.41	1.02	0.20		92	

Test System:HOPOO HPG1800
 Temperature:25.3DEG
 Operators:
 Test Date:2021年11月29日

Test Set: 8.0deg/s C-Gamma (TYPE C)
 Humidity:65.0%
 Test Distance:8.800 m
 Remarks:

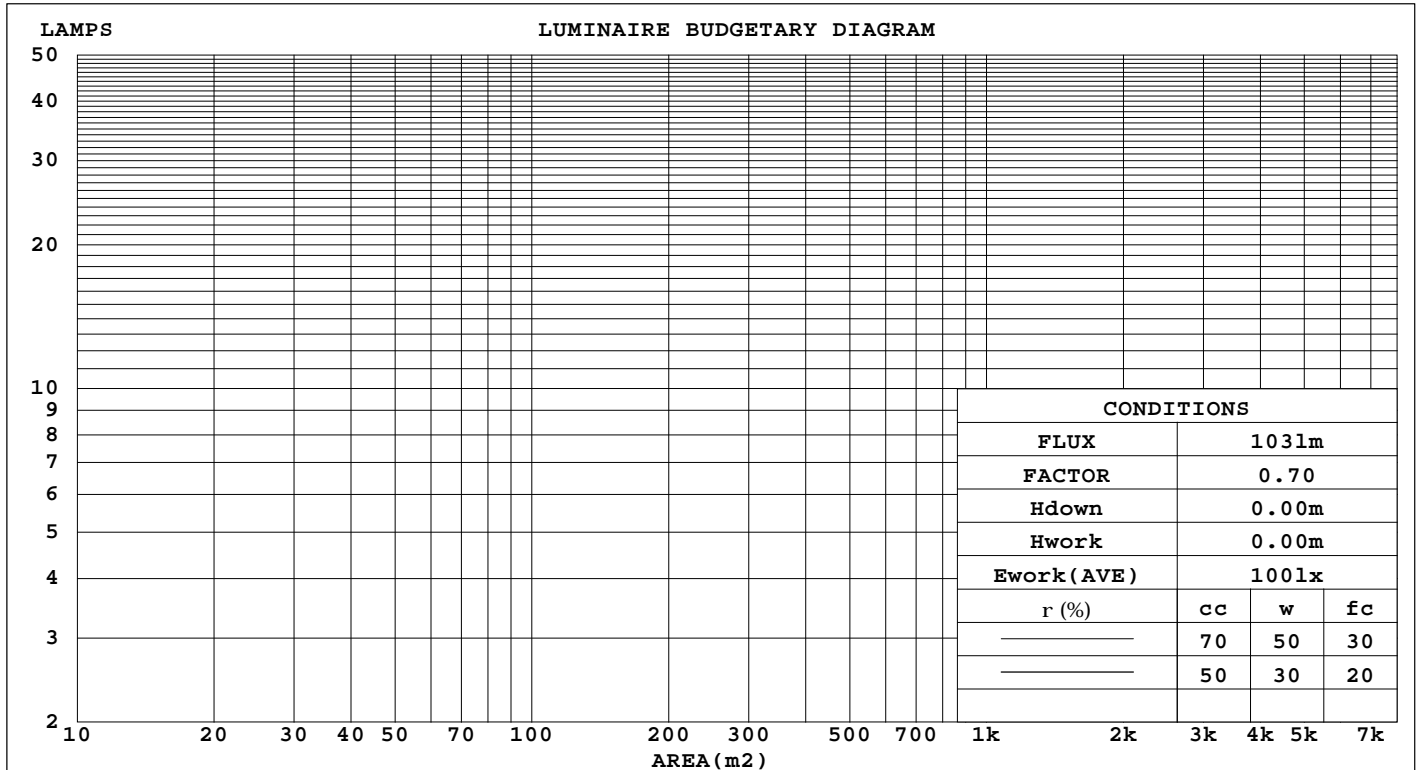
GONIOPHOTOMETERS SYSTEM TEST REPORT

CU AND LUMINAIRE BUDGETARY ESTIMATE DIAGRAM

Report number:

MANUFACTURER:											
Address:											
NAME: 46-RS-5050-24-60-12-X-Y R						TYPE: LED Strip			WEIGHT:		
SPECIFICATION: 5050 60D				CCT(K): 0		DIMENSION: 1M*0.012M			SERIAL No.: 20211129017		

rcc	80%			70%			50%			30%			10%			0
rw	50%	30%	10%	50%	30%	10%	50%	30%	10%	50%	30%	10%	50%	30%	10%	0
r fc	20%			20%			20%			20%			20%			0
RCR	RCR:Room Cavity Ratio						Coefficients of Utilization(CU)									
0.0	1.16	1.16	1.16	1.12	1.12	1.12	1.05	1.05	1.05	.98	.98	.98	.92	.92	.92	.89
1.0	.99	.94	.90	.96	.92	.88	.90	.86	.83	.84	.81	.78	.78	.76	.74	.71
2.0	.86	.78	.72	.83	.76	.70	.77	.72	.67	.72	.68	.64	.68	.64	.61	.58
3.0	.75	.66	.59	.72	.64	.58	.68	.61	.55	.63	.58	.53	.59	.55	.51	.48
4.0	.66	.56	.49	.64	.55	.49	.60	.52	.47	.56	.50	.45	.53	.47	.43	.41
5.0	.58	.49	.42	.57	.48	.41	.53	.46	.40	.50	.44	.39	.47	.42	.37	.35
6.0	.52	.43	.36	.51	.42	.36	.48	.40	.35	.45	.39	.34	.43	.37	.32	.30
7.0	.47	.38	.32	.46	.37	.31	.43	.36	.30	.41	.34	.30	.39	.33	.29	.26
8.0	.43	.34	.28	.42	.34	.28	.40	.32	.27	.37	.31	.26	.35	.30	.25	.23
9.0	.39	.31	.25	.38	.30	.25	.36	.29	.24	.34	.28	.24	.33	.27	.23	.21
10.0	.36	.28	.23	.35	.28	.22	.33	.27	.22	.32	.26	.21	.30	.25	.21	.19



Test System:HOPOO HPG1800
 Temperature:25.3DEG
 Operators:
 Test Date:2021年11月29日

Test Set: 8.0deg/s C-Gamma (TYPE C)
 Humidity:65.0%
 Test Distance:8.800 m
 Remarks:

GONIOPHOTOMETERS SYSTEM TEST REPORT

WEC AND CCEC

Report number:

MANUFACTURER:											
Address:											
NAME: 46-RS-5050-24-60-12-X-Y R						TYPE: LED Strip			WEIGHT:		
SPECIFICATION: 5050 60D				CCT(K): 0		DIMENSION: 1M*0.012M			SERIAL No.: 20211129017		

rcc	80%			70%			50%			30%			10%			0
rw	50%	30%	10%	50%	30%	10%	50%	30%	10%	50%	30%	10%	50%	30%	10%	0
rfc	20%			20%			20%			20%			20%			0
RCR	RCR:Room Cavity Ratio						Wall Exitance Coefficients(WEC)									
0.0																
1.0	.348	.198	.063	.338	.193	.061	.318	.183	.058	.300	.173	.056	.284	.164	.053	
2.0	.313	.172	.053	.304	.167	.052	.286	.159	.049	.270	.151	.047	.255	.144	.045	
3.0	.284	.151	.045	.275	.147	.044	.260	.141	.043	.245	.134	.041	.231	.128	.040	
4.0	.259	.134	.040	.251	.131	.039	.237	.126	.037	.223	.120	.036	.211	.115	.035	
5.0	.237	.121	.035	.230	.118	.034	.217	.113	.033	.205	.108	.032	.194	.104	.031	
6.0	.218	.110	.031	.212	.107	.031	.201	.103	.030	.190	.099	.029	.179	.094	.028	
7.0	.202	.100	.028	.197	.098	.028	.186	.094	.027	.176	.090	.026	.167	.087	.025	
8.0	.188	.092	.026	.183	.090	.025	.174	.087	.025	.164	.083	.024	.156	.080	.023	
9.0	.176	.085	.024	.171	.083	.023	.162	.080	.023	.154	.077	.022	.146	.074	.021	
10.0	.165	.079	.022	.161	.078	.022	.153	.075	.021	.145	.072	.020	.138	.069	.020	

rcc	80%			70%			50%			30%			10%			0	
rw	50%	30%	10%	50%	30%	10%	50%	30%	10%	50%	30%	10%	50%	30%	10%	0	
rfc	20%			20%			20%			20%			20%			0	
RCR	RCR:Room Cavity Ratio						Ceiling Cavity Exitance Coefficients(CCEC)										
0.0	.273	.273	.273	.234	.234	.234	.159	.159	.159	.092	.092	.092	.029	.029	.029		
1.0	.266	.239	.215	.228	.205	.185	.156	.141	.128	.090	.082	.074	.029	.026	.024		
2.0	.259	.216	.179	.222	.186	.155	.152	.129	.108	.088	.075	.063	.028	.024	.021		
3.0	.252	.199	.157	.216	.172	.136	.148	.119	.095	.086	.070	.056	.027	.023	.018		
4.0	.244	.186	.142	.209	.161	.123	.144	.112	.087	.083	.066	.051	.027	.021	.017		
5.0	.237	.176	.131	.203	.152	.114	.140	.106	.081	.081	.062	.048	.026	.020	.016		
6.0	.229	.168	.124	.197	.145	.108	.136	.102	.076	.079	.060	.045	.025	.020	.015		
7.0	.222	.161	.118	.191	.140	.103	.132	.098	.073	.077	.058	.043	.025	.019	.014		
8.0	.216	.156	.114	.186	.135	.100	.129	.095	.071	.075	.056	.042	.024	.018	.014		
9.0	.210	.151	.111	.181	.131	.097	.125	.092	.069	.073	.054	.041	.024	.018	.014		
10.0	.204	.147	.108	.176	.127	.095	.122	.090	.067	.071	.053	.040	.023	.017	.013		

Test System:HOPOO HPG1800
 Temperature:25.3DEG
 Operators:
 Test Date:2021年11月29日

Test Set: 8.0deg/s C-Gamma (TYPE C)
 Humidity:65.0%
 Test Distance:8.800 m
 Remarks:

GONIOPHOTOMETERS SYSTEM TEST REPORT

UGR Table

Report number:

MANUFACTURER:											
Address:											
NAME: 46-RS-5050-24-60-12-X-Y R						TYPE: LED Strip		WEIGHT:			
SPECIFICATION: 5050 60D			CCT(K): 0			DIMENSION: 1M*0.012M			SERIAL No.: 20211129017		
ceiling/cavity	0.7	0.7	0.5	0.5	0.3	0.7	0.7	0.5	0.5	0.3	
walls	0.5	0.3	0.5	0.3	0.3	0.5	0.3	0.5	0.3	0.3	
working plane	0.2	0.2	0.2	0.2	0.2	0.2	0.2	0.2	0.2	0.2	
Room dimensions		Viewed crosswise					Viewed endwise				
x = 2H y = 2H	2H	9.8	11.2	10.2	11.6	12.1	9.8	11.3	10.2	11.7	12.1
	3H	11.8	13.2	12.3	13.6	14.0	12.2	13.5	12.6	13.9	14.4
	4H	12.7	14.0	13.2	14.4	14.9	13.5	14.7	13.9	15.2	15.6
	6H	13.5	14.7	14.0	15.2	15.7	14.8	16.0	15.3	16.4	16.9
	8H	13.9	15.0	14.4	15.5	16.0	15.5	16.6	16.0	17.1	17.6
	12H	14.1	15.2	14.7	15.7	16.3	16.3	17.4	16.8	17.9	18.4
4H	2H	10.5	11.7	10.9	12.2	12.7	10.5	11.7	11.0	12.2	12.7
	3H	12.7	13.8	13.2	14.3	14.8	13.0	14.1	13.5	14.6	15.1
	4H	13.7	14.7	14.3	15.3	15.8	14.4	15.4	15.0	15.9	16.5
	6H	14.7	15.6	15.3	16.1	16.7	15.9	16.8	16.5	17.3	17.9
	8H	15.1	15.9	15.7	16.5	17.1	16.7	17.6	17.3	18.1	18.7
	12H	15.5	16.3	16.1	16.8	17.5	17.6	18.4	18.2	19.0	19.6
8H	4H	14.2	15.0	14.7	15.5	16.2	14.7	15.6	15.3	16.1	16.7
	6H	15.3	16.0	15.9	16.6	17.3	16.5	17.2	17.1	17.7	18.4
	8H	15.9	16.5	16.5	17.1	17.8	17.4	18.1	18.0	18.7	19.3
	12H	16.4	17.0	17.1	17.6	18.3	18.6	19.1	19.2	19.7	20.4
12H	4H	14.3	15.0	14.8	15.6	16.2	14.8	15.5	15.4	16.1	16.8
	6H	15.5	16.1	16.1	16.7	17.4	16.6	17.2	17.2	17.8	18.5
	8H	16.2	16.7	16.8	17.3	18.0	17.6	18.1	18.2	18.8	19.5
Variations with the observer position at spacings:											
S = 1.0H	+ 0.1 / - 0.1					+ 0.1 / - 0.1					
1.5H	+ 0.2 / - 0.2					+ 0.2 / - 0.2					
2.0H	+ 0.2 / - 0.3					+ 0.2 / - 0.3					

CIE Pub.117 Corrected 102.7 lm Total Lamp Luminous Flux.(8log(F/F0) = -7.9)

Test System:HOPOO HPG1800
 Temperature:25.3DEG
 Operators:
 Test Date:2021年11月29日

Test Set: 8.0deg/s C-Gamma (TYPE C)
 Humidity:65.0%
 Test Distance:8.800 m
 Remarks:

GONIOPHOTOMETERS SYSTEM TEST REPORT

UTILIZATION FACTORS TABLE

Report number:

MANUFACTURER:			
Address:			
NAME: 46-RS-5050-24-60-12-X-Y R		TYPE: LED Strip	WEIGHT:
SPECIFICATION: 5050 60D	CCT(K): 0	DIMENSION: 1M*0.012M	SERIAL No.: 20211129017

REFLECTANCE										
Ceiling	0.8	0.8	0.8	0.7	0.7	0.7	0.5	0.5	0.5	0
Walls	0.7	0.5	0.3	0.7	0.5	0.3	0.7	0.5	0.3	0
Working plane	0.2	0.2	0.2	0.2	0.2	0.2	0.2	0.2	0.2	0
ROOM INDEX	UTILIZATION FACTORS(PERCENT) $k(RI) \times RCR = 5$									
$k = 0.60$	52	40	32	51	39	32	49	38	32	25
0.80	61	49	41	60	48	41	57	47	40	32
1.00	69	57	49	68	56	49	65	57	48	40
1.25	76	65	57	74	64	56	71	61	55	46
1.50	82	70	63	79	69	62	75	66	60	51
2.00	89	79	71	86	77	70	81	74	68	58
2.50	93	84	77	90	82	75	85	78	73	62
3.00	97	88	82	94	86	80	88	82	77	65
4.00	101	94	88	98	92	86	92	87	82	70
5.00	104	98	93	100	95	90	94	90	86	73
ROOM INDEX	UF(total)									Direct
According to DIN EN 13032-2 2004			Suspended					SHRNOM = 1.25		

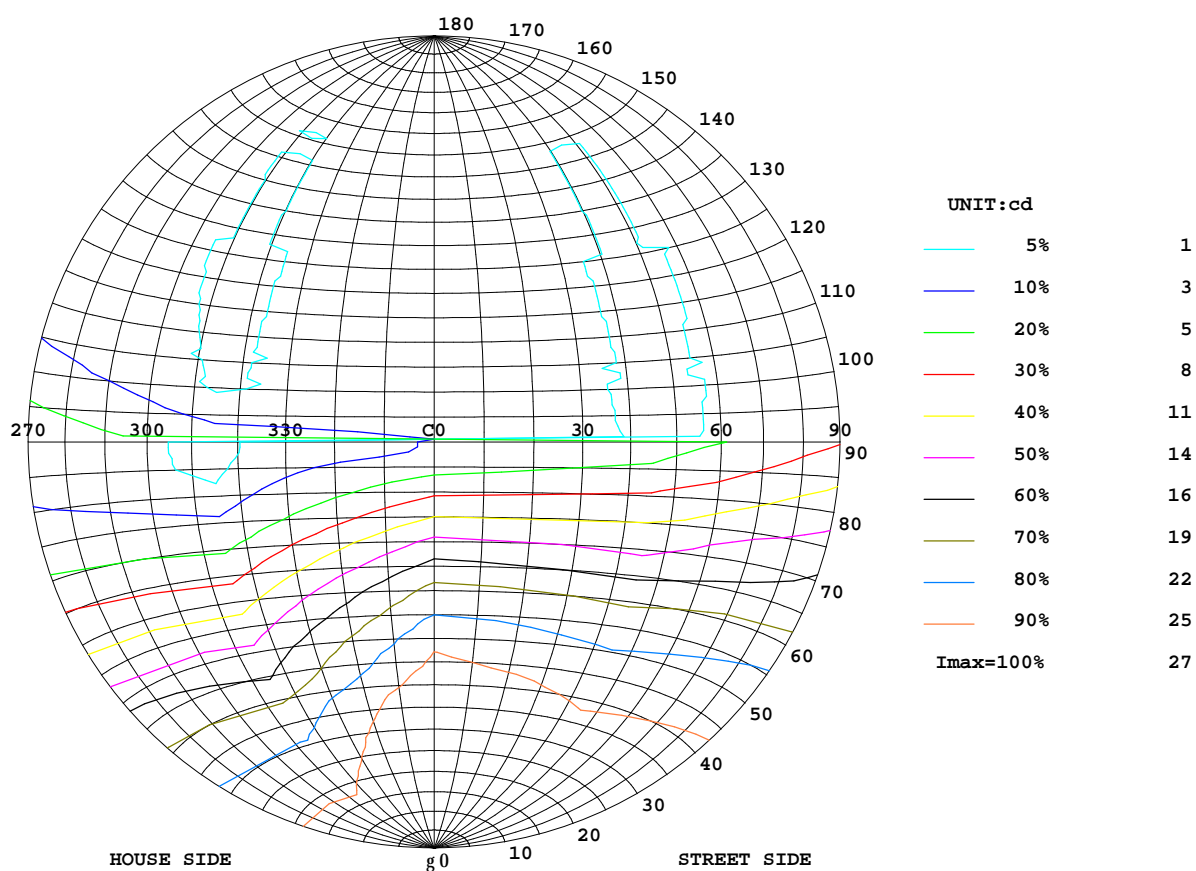
Test System:HOPOO HPG1800
 Temperature:25.3DEG
 Operators:
 Test Date:2021年11月29日

Test Set: 8.0deg/s C-Gamma (TYPE C)
 Humidity:65.0%
 Test Distance:8.800 m
 Remarks:

ISOCANDELA DIAGRAM

Report number:

MANUFACTURER:			
Address:			
NAME: 46-RS-5050-24-60-12-X-Y R		TYPE: LED Strip	WEIGHT:
SPECIFICATION: 5050 60D	CCT(K): 0	DIMENSION: 1M*0.012M	SERIAL No.: 20211129017



Test System:HOPOO HPG1800
Temperature:25.3DEG
Operators:
Test Date:2021年11月29日

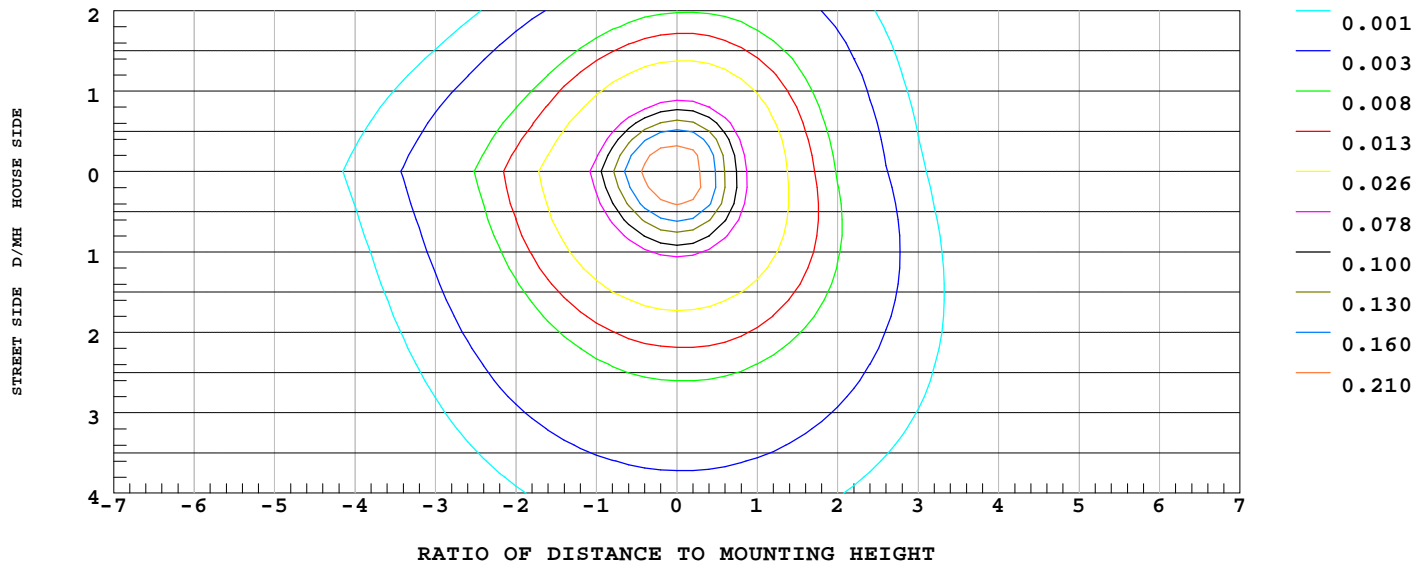
Test Set: 8.0deg/s C-Gamma (TYPE C)
Humidity:65.0%
Test Distance:8.800 m
Remarks:

ISOLUX DIAGRAM

Report number:

MANUFACTURER:			
Address:			
NAME: 46-RS-5050-24-60-12-X-Y R		TYPE: LED Strip	WEIGHT:
SPECIFICATION: 5050 60D	CCT(K): 0	DIMENSION: 1M*0.012M	SERIAL No.: 20211129017

ILLUMINANCE AT MH=10 m, Enadir = 0.26 lx



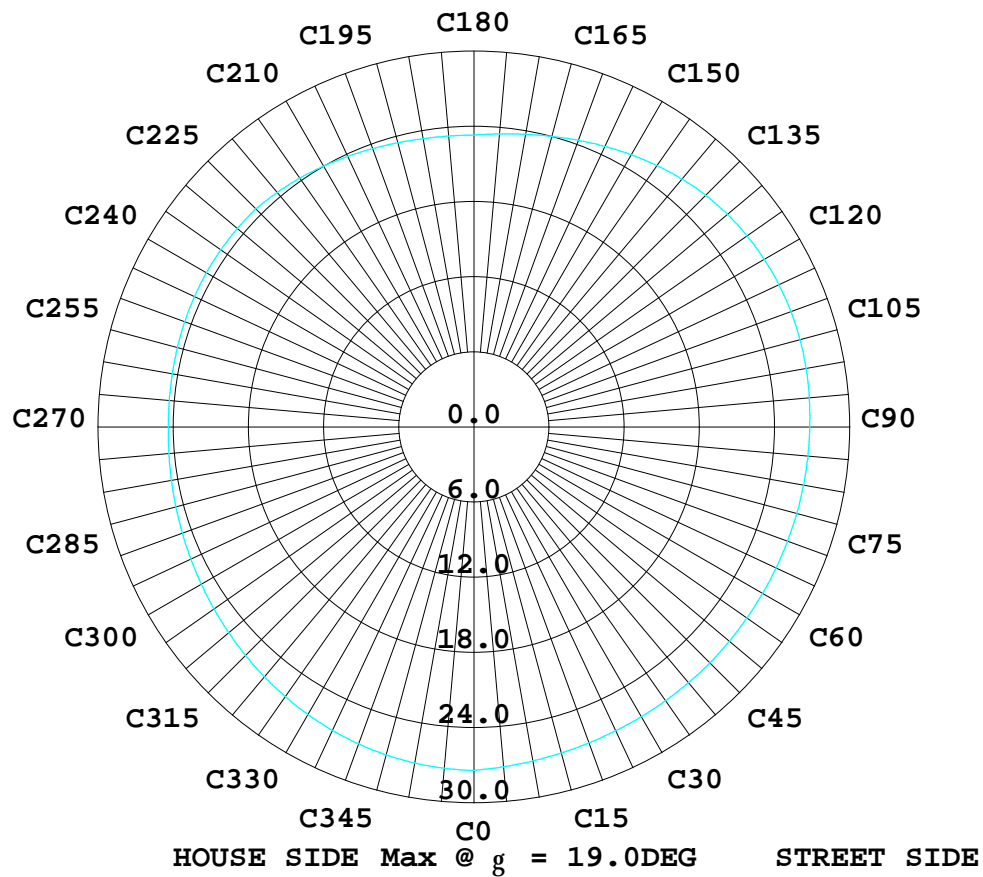
Test System: HOPOO HPG1800
Temperature: 25.3 DEG
Operators:
Test Date: 2021年11月29日

Test Set: 8.0deg/s C-Gamma (TYPE C)
Humidity: 65.0%
Test Distance: 8.800 m
Remarks:

ISOCANDELA DIAGRAM

Report number:

MANUFACTURER:			
Address:			
NAME: 46-RS-5050-24-60-12-X-Y R		TYPE: LED Strip	WEIGHT:
SPECIFICATION: 5050 60D	CCT(K): 0	DIMENSION: 1M*0.012M	SERIAL No.: 20211129017



Test System: HOPOO HPG1800
Temperature: 25.3DEG
Operators:
Test Date: 2021年11月29日

Test Set: 8.0deg/s C-Gamma (TYPE C)
Humidity: 65.0%
Test Distance: 8.800 m
Remarks: