

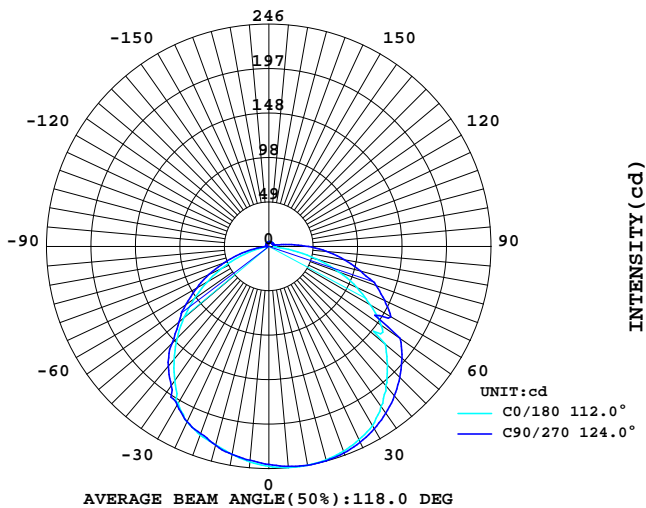
## LUMINAIRE PHOTOMETRIC TEST REPORT

Report number:

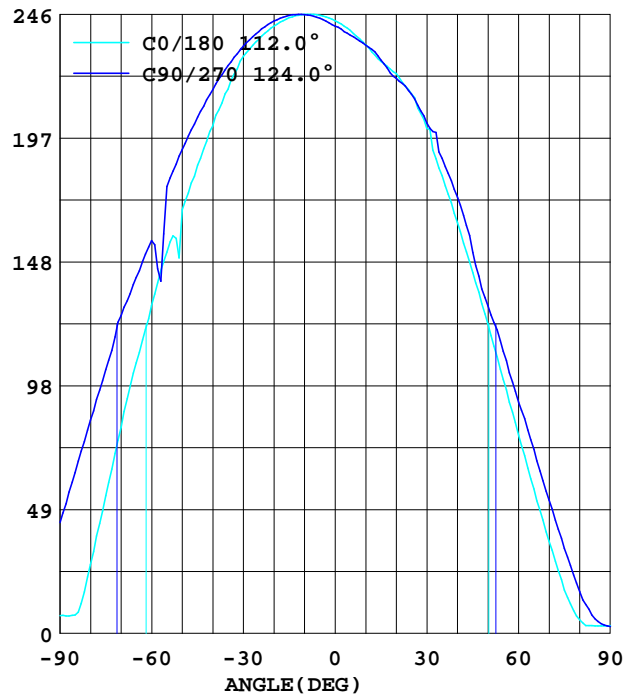
MANUFACTURER:			
Address:			
NAME: 47-RS-5050-24-112-12-X-Y W		TYPE: LED Strip	WEIGHT:
SPECIFICATION: 5050 112D	CCT(K): 2700	DIMENSION: 1M*0.012M	SERIAL No.: 20211130009

DATA OF LAMP		Imax(cd)	245.9	S/MH(C0/180)	1.38
MODEL	5050	EFFICIENCY(%)	100.0	S/MH(C90/270)	1.44
NOMINAL POWER(W)	9	TOTAL FLUX(lm)	774.76	Voltage(V)	24.01
RATED VOLTAGE(V)	24	EFFICIENCY(lm/W)	86.4	Current(A)	0.373
NOMINAL FLUX(lm)	774.8	h up(%)	4.3	Power(W)	8.970
LAMPS QUANTITY	1	h down(%)	95.7	Power Factor(PF)	1.000
TEST VOLTAGE(V)	24.0	Effective Flux(lm)	734.5	EEL	0.150

LUMINOUS INTENSITY DISTRIBUTION



LUMINOUS INTENSITY DISTRIBUTION



Test System:HOPOO HPG1800  
Temperature:25.3DEG  
Operators:  
Test Date:2021年11月30日

Test Set: 8.0deg/s C-Gamma (TYPE C)  
Humidity:65.0%  
Test Distance:8.800 m  
Remarks:

## Color Temperature Data List

Report number:

MANUFACTURER:			
Address:			
NAME: 47-RS-5050-24-112-12-X-Y W		TYPE: LED Strip	WEIGHT:
SPECIFICATION: 5050 112D	CCT(K): 2700	DIMENSION: 1M*0.012M	SERIAL No.: 20211130009

---

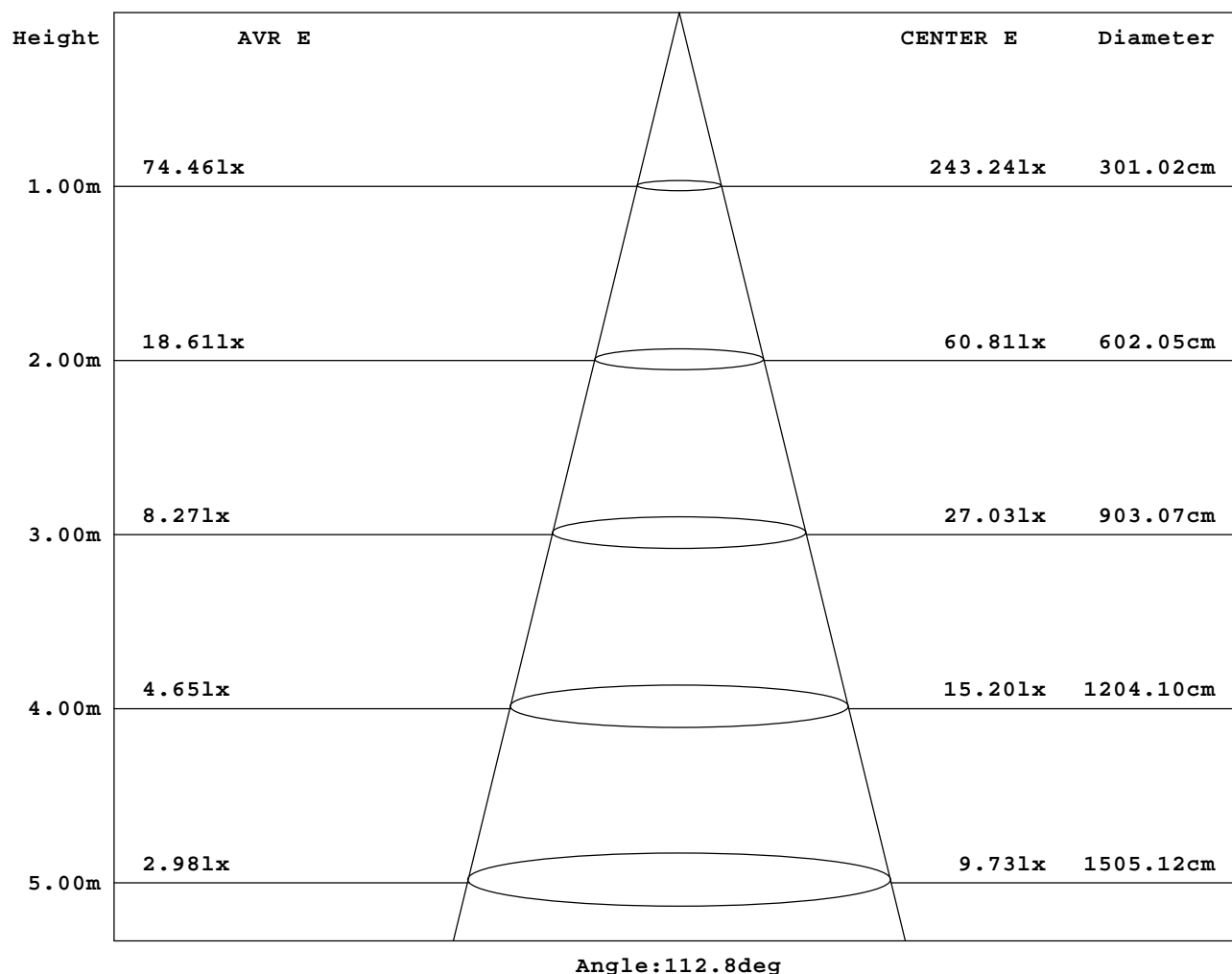
Test System:HOPOO HPG1800  
Temperature:25.3DEG  
Operators:  
Test Date:2021年11月30日

Test Set: 8.0deg/s C-Gamma (TYPE C)  
Humidity:65.0%  
Test Distance:8.800 m  
Remarks:

## AVERAGE AND CENTER E Figure

Report number:

MANUFACTURER:			
Address:			
NAME: 47-RS-5050-24-112-12-X-Y W		TYPE: LED Strip	WEIGHT:
SPECIFICATION: 5050 112D	CCT(K): 2700	DIMENSION: 1M*0.012M	SERIAL No.: 20211130009



Test System: HOPOO HPG1800  
 Temperature: 25.3DEG  
 Operators:  
 Test Date: 2021年11月30日

Test Set: 8.0deg/s C-Gamma (TYPE C)  
 Humidity: 65.0%  
 Test Distance: 8.800 m  
 Remarks:

# GONIOPHOTOMETERS SYSTEM TEST REPORT

## ZONAL FLUX DIAGRAM

Report number:

MANUFACTURER:			
Address:			
NAME: 47-RS-5050-24-112-12-X-Y W		TYPE: LED Strip	WEIGHT:
SPECIFICATION: 5050 112D	CCT(K): 2700	DIMENSION: 1M*0.012M	SERIAL No.: 20211130009

g	C0	C45	C90	C135	C180	C225	C270	C315	g	Zone	tBtal
5.0	245.4	245.1	244.2	245.6	239.4	242.0	237.5	240.1	0- 5	5.805	5.805
10.0	245.7	244.0	245.7	245.7	233.7	237.6	233.5	234.4	5- 10	17.26	23.06
15.0	244.4	241.1	245.4	243.9	227.1	231.6	227.6	226.9	10- 15	28.25	51.31
20.0	241.0	236.1	243.1	240.2	222.3	223.9	220.3	218.0	15- 20	38.45	89.77
25.0	235.8	229.4	238.9	234.8	214.2	214.2	214.1	206.9	20- 25	47.65	137.4
30.0	229.2	221.3	233.2	227.9	200.5	202.7	202.7	194.1	25- 30	55.40	192.8
35.0	216.0	211.0	225.4	219.0	181.8	190.1	188.5	180.2	30- 35	61.24	254.0
40.0	201.4	199.3	215.8	208.3	163.0	175.3	173.3	154.3	35- 40	64.64	318.7
45.0	186.0	184.3	204.9	198.8	143.2	160.2	151.3	149.0	40- 45	66.32	385.0
50.0	168.3	168.6	192.1	180.8	122.9	145.1	130.1	119.3	45- 50	65.67	450.7
55.0	151.3	151.4	177.4	164.9	100.8	123.5	111.9	97.34	50- 55	62.57	513.2
60.0	130.2	126.6	155.9	148.2	78.75	97.34	91.84	80.22	55- 60	56.60	569.8
65.0	107.4	101.4	141.4	128.1	57.38	74.34	73.18	58.38	60- 65	50.22	620.1
70.0	81.85	84.25	126.2	100.4	36.62	58.93	53.04	41.89	65- 70	41.83	661.9
75.0	54.67	64.27	104.7	81.00	17.26	37.86	33.68	25.01	70- 75	32.61	694.5
80.0	27.41	43.36	84.64	60.55	5.420	23.38	16.57	11.61	75- 80	23.06	717.6
85.0	7.356	27.80	63.88	42.74	3.020	11.22	5.808	6.659	80- 85	14.64	732.2
90.0	7.047	13.00	44.06	24.78	3.097	6.892	2.787	5.962	85- 90	9.271	741.5
95.0	5.653	3.794	25.47	12.31	3.175	5.962	2.787	5.885	90- 95	5.791	747.3
100.0	5.420	2.710	11.77	4.336	3.407	5.808	2.942	5.653	95-100	3.544	750.8
105.0	5.188	2.865	6.272	3.020	3.562	5.653	3.097	5.498	100-105	2.520	753.4
110.0	5.111	3.020	5.575	3.020	3.717	5.498	3.252	5.420	105-110	2.269	755.6
115.0	5.033	3.175	5.343	3.097	3.872	5.420	3.407	5.420	110-115	2.192	757.8
120.0	4.956	3.329	5.188	3.175	4.026	5.343	3.562	5.343	115-120	2.117	759.9
125.0	4.956	3.484	5.111	3.329	4.181	5.343	3.717	5.420	120-125	2.039	762.0
130.0	5.033	3.562	5.111	3.484	4.336	5.420	3.872	5.420	125-130	1.950	763.9
135.0	5.033	3.794	5.111	3.562	4.491	5.420	4.026	5.420	130-135	1.845	765.8
140.0	5.111	3.949	5.111	3.717	4.646	5.420	4.181	5.420	135-140	1.722	767.5
145.0	5.188	4.104	5.111	3.949	4.801	5.498	4.336	5.498	140-145	1.582	769.1
150.0	5.188	4.181	5.188	4.104	4.956	5.498	4.414	5.498	145-150	1.424	770.5
155.0	5.265	4.336	5.188	4.259	5.033	5.498	4.491	5.498	150-155	1.243	771.7
160.0	5.343	4.414	5.265	4.336	5.111	5.498	4.646	5.498	155-160	1.044	772.8
165.0	5.420	4.568	5.343	4.491	5.188	5.498	4.646	5.420	160-165	0.830	773.6
170.0	5.420	4.646	5.343	4.568	5.265	5.420	4.723	5.420	165-170	0.603	774.2
175.0	5.498	4.723	5.420	4.646	5.265	5.420	4.723	5.343	170-175	0.365	774.6
180.0	5.420	4.878	5.343	4.801	5.575	5.265	4.878	5.188	175-180	0.123	774.7
DEG	LUMINOUS INTENSITY:cd								UNIT:lm		

Test System:HOPOO HPG1800  
Temperature:25.3DEG  
Operators:  
Test Date:2021年11月30日

Test Set: 8.0deg/s C-Gamma (TYPE C)  
Humidity:65.0%  
Test Distance:8.800 m  
Remarks:

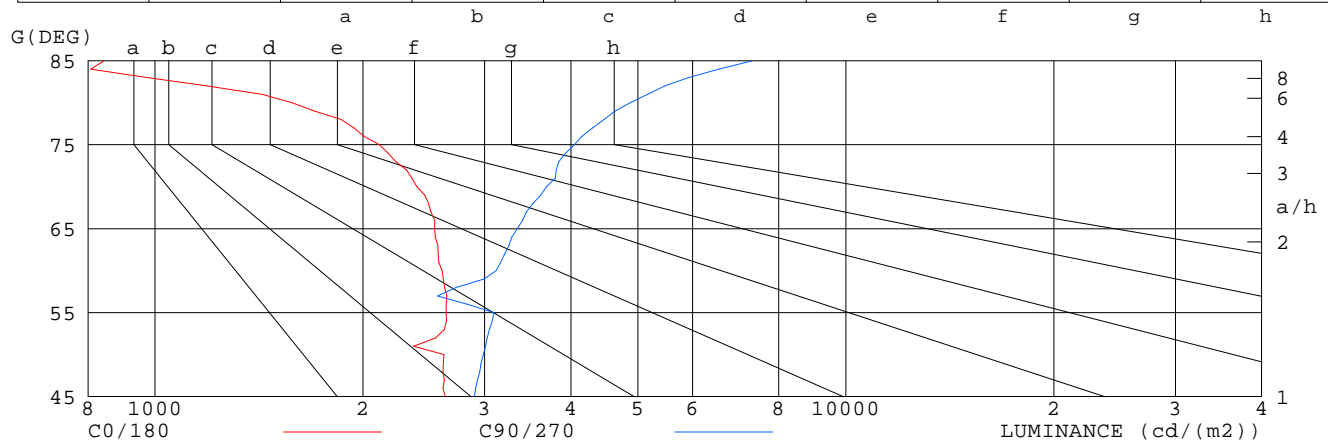
## LUMINANCE LIMITATION CURVES

Report number:

MANUFACTURER:			
Address:			
NAME: 47-RS-5050-24-112-12-X-Y W		TYPE: LED Strip	WEIGHT:
SPECIFICATION: 5050 112D	CCT(K): 2700	DIMENSION: 1M*0.012M	SERIAL No.: 20211130009

## LUMINANCE LIMITATION CURVES

GLARE	CLASS	ILLUMINANCE (lx)							
1.15	A	2000	1000	500	<=300				
1.50	B		2000	1000	500	<=300			
1.85	C			2000	1000	500	<=300		
2.20	D				2000	1000	500	<=300	
2.55	E					2000	1000	500	<=300



LUMINANCE cd/m²		
G (DEG)	C0/180	C90/270
85	844	7330
80	1579	4874
75	2112	4048
70	2393	3691
65	2542	3346
60	2605	3119
55	2639	3094
50	2619	2989
45	2631	2899

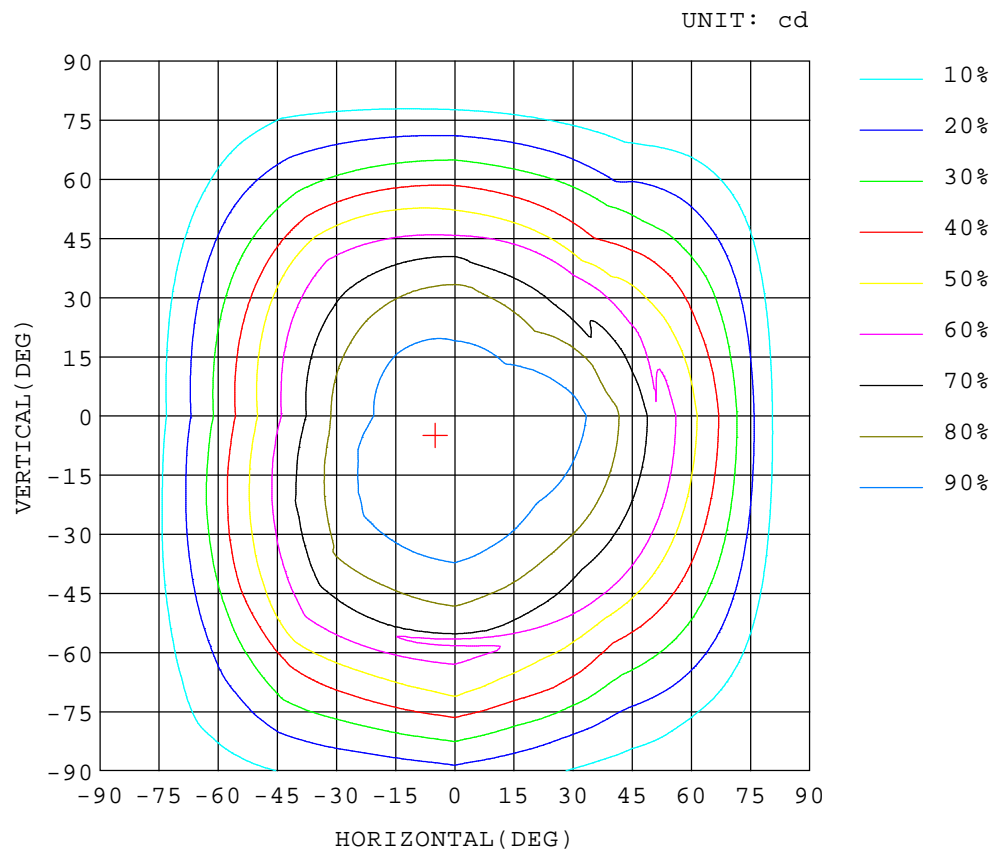
Test System: HOPOO HPG1800  
 Temperature: 25.3 DEG  
 Operators:  
 Test Date: 2021年11月30日

Test Set: 8.0deg/s C-Gamma (TYPE C)  
 Humidity: 65.0%  
 Test Distance: 8.800 m  
 Remarks:

## ISOCANDELA DIAGRAM

Report number:

MANUFACTURER:			
Address:			
NAME: 47-RS-5050-24-112-12-X-Y W		TYPE: LED Strip	WEIGHT:
SPECIFICATION: 5050 112D	CCT(K): 2700	DIMENSION: 1M*0.012M	SERIAL No.: 20211130009



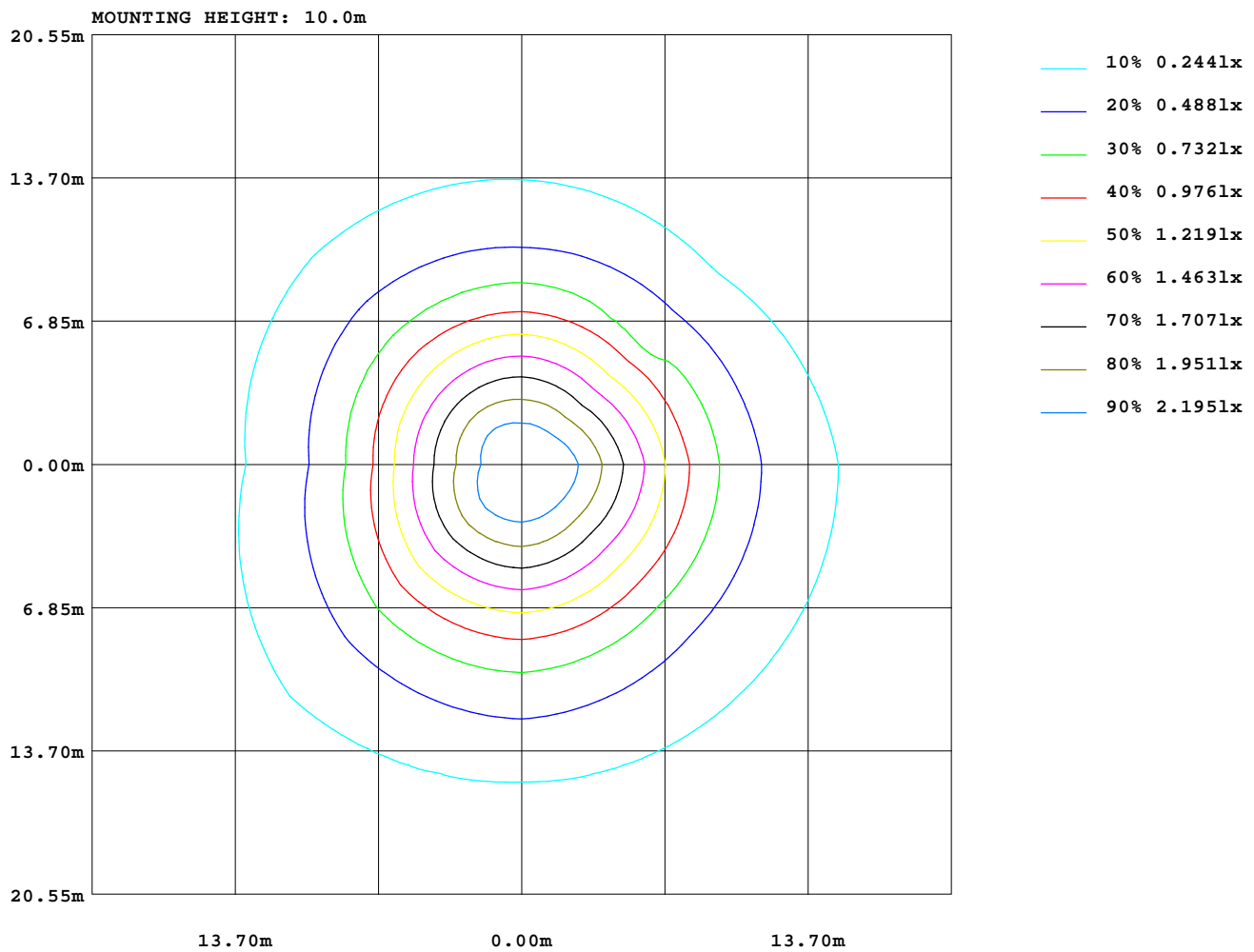
Test System: HOPOO HPG1800  
Temperature: 25.3 DEG  
Operators:  
Test Date: 2021年11月30日

Test Set: 8.0deg/s C-Gamma (TYPE C)  
Humidity: 65.0%  
Test Distance: 8.800 m  
Remarks:

## ISOLUX DIAGRAM

Report number:

MANUFACTURER:			
Address:			
NAME: 47-RS-5050-24-112-12-X-Y W		TYPE: LED Strip	WEIGHT:
SPECIFICATION: 5050 112D	CCT(K): 2700	DIMENSION: 1M*0.012M	SERIAL No.: 20211130009



Test System: HOPOO HPG1800  
Temperature: 25.3DEG  
Operators:  
Test Date: 2021年11月30日

Test Set: 8.0deg/s C-Gamma (TYPE C)  
Humidity: 65.0%  
Test Distance: 8.800 m  
Remarks:

# GONIOPHOTOMETERS SYSTEM TEST REPORT

## AREA LUMINOUS FLUX

Report number:

MANUFACTURER:			
Address:			
NAME: 47-RS-5050-24-112-12-X-Y W		TYPE: LED Strip	WEIGHT:
SPECIFICATION: 5050 112D	CCT(K): 2700	DIMENSION: 1M*0.012M	SERIAL No.: 20211130009

VERTICAL(°)	AREA FLUX DIAGRAM																		UNIT:lm		Φ t	Φ a
	0.01	0.04	0.08	0.14	0.21	0.24	0.26	0.26	0.24	0.22	0.21	0.19	0.16	0.14	0.11	0.08	0.05	0.02	2.64	0.00		
90																						
80	0.01	0.04	0.12	0.28	0.52	0.72	0.88	1.00	1.04	1.00	0.86	0.67	0.47	0.31	0.22	0.12	0.06	0.02	8.32	5.46		
70	0.01	0.04	0.12	0.28	0.52	0.72	0.88	1.00	1.04	1.00	0.86	0.67	0.47	0.31	0.22	0.12	0.06	0.02	8.32	5.46		
60	0.01	0.05	0.20	0.52	0.99	1.43	1.79	2.06	2.20	2.14	1.89	1.52	1.09	0.76	0.52	0.27	0.08	0.02	17.5	16.8		
50	0.01	0.07	0.32	0.84	1.49	2.19	2.80	3.23	3.40	3.30	2.96	2.45	1.83	1.31	0.91	0.47	0.14	0.02	27.7	27.4		
40	0.01	0.10	0.46	1.12	2.01	3.07	3.86	4.32	4.58	4.53	4.12	3.38	2.53	1.94	1.30	0.70	0.22	0.02	38.3	38.1		
30	0.01	0.12	0.59	1.39	2.52	3.69	4.54	5.30	5.69	5.61	5.08	4.30	3.42	2.51	1.70	0.90	0.29	0.03	47.7	47.5		
	0.01	0.15	0.68	1.61	2.86	4.03	5.22	6.02	6.43	6.37	5.85	5.00	4.16	3.07	2.04	1.08	0.36	0.03	55.0	54.8		
	0.01	0.16	0.74	1.75	3.03	4.37	5.63	6.49	6.89	6.83	6.38	5.74	4.73	3.54	2.32	1.24	0.41	0.03	60.3	60.2		
	0.01	0.16	0.76	1.78	3.10	4.53	5.84	6.69	7.21	7.22	6.94	6.28	5.21	3.88	2.52	1.35	0.44	0.04	64.0	63.9		
	0.01	0.18	0.79	1.84	3.19	4.64	5.98	6.84	7.38	7.41	7.11	6.43	5.34	3.97	2.59	1.38	0.45	0.04	65.6	65.5		
	0.01	0.19	0.84	1.92	3.29	4.74	6.06	6.97	7.39	7.35	6.91	6.21	5.15	3.82	2.53	1.32	0.43	0.04	65.2	65.1		
-30	0.02	0.20	0.84	1.92	3.26	4.69	5.96	6.77	7.18	7.14	6.63	5.84	4.82	3.58	2.36	1.22	0.40	0.03	62.9	62.7		
-40	0.02	0.19	0.78	1.83	3.12	4.49	5.63	6.35	6.76	6.71	6.21	5.38	4.36	3.26	2.08	1.08	0.35	0.03	58.6	58.5		
-50	0.02	0.17	0.69	1.63	2.86	4.10	5.04	5.73	6.13	6.08	5.57	4.79	3.81	2.74	1.74	0.91	0.28	0.03	52.3	52.2		
-60	0.02	0.15	0.58	1.34	2.42	3.50	4.22	4.76	5.07	5.01	4.57	3.87	2.98	2.12	1.39	0.71	0.21	0.03	43.0	42.7		
-70	0.02	0.14	0.46	1.05	1.85	2.65	3.35	3.88	4.21	4.12	3.64	3.00	2.27	1.57	1.00	0.48	0.14	0.02	33.9	33.6		
-80	0.02	0.12	0.35	0.76	1.32	1.86	2.35	2.77	3.09	3.03	2.60	2.08	1.52	1.00	0.60	0.28	0.10	0.02	23.9	23.3		
-90	0.02	0.09	0.24	0.48	0.78	1.08	1.37	1.64	1.86	1.81	1.50	1.16	0.81	0.51	0.32	0.18	0.08	0.02	13.9	12.6		
	-90	-80	-70	-60	-50	-40	-30	-20	HORIZONTAL(°)				20	30	40	50	60	70	80	90		
Φ t	0.24	2.32	9.51	22.2	38.9	56.1	70.8	81.1	86.8	85.9	79.0	68.3	54.7	40.0	26.2	13.8	4.49	0.48	775			
Φ a	0.00	0.90	8.64	21.6	38.4	55.6	70.4	80.7	86.4	85.5	78.6	67.9	54.1	39.3	25.5	13.0	3.70	0.02		735		

Test System:HOPOO HPG1800  
 Temperature:25.3DEG  
 Operators:  
 Test Date:2021年11月30日

Test Set: 8.0deg/s C-Gamma (TYPE C)  
 Humidity:65.0%  
 Test Distance:8.800 m  
 Remarks:

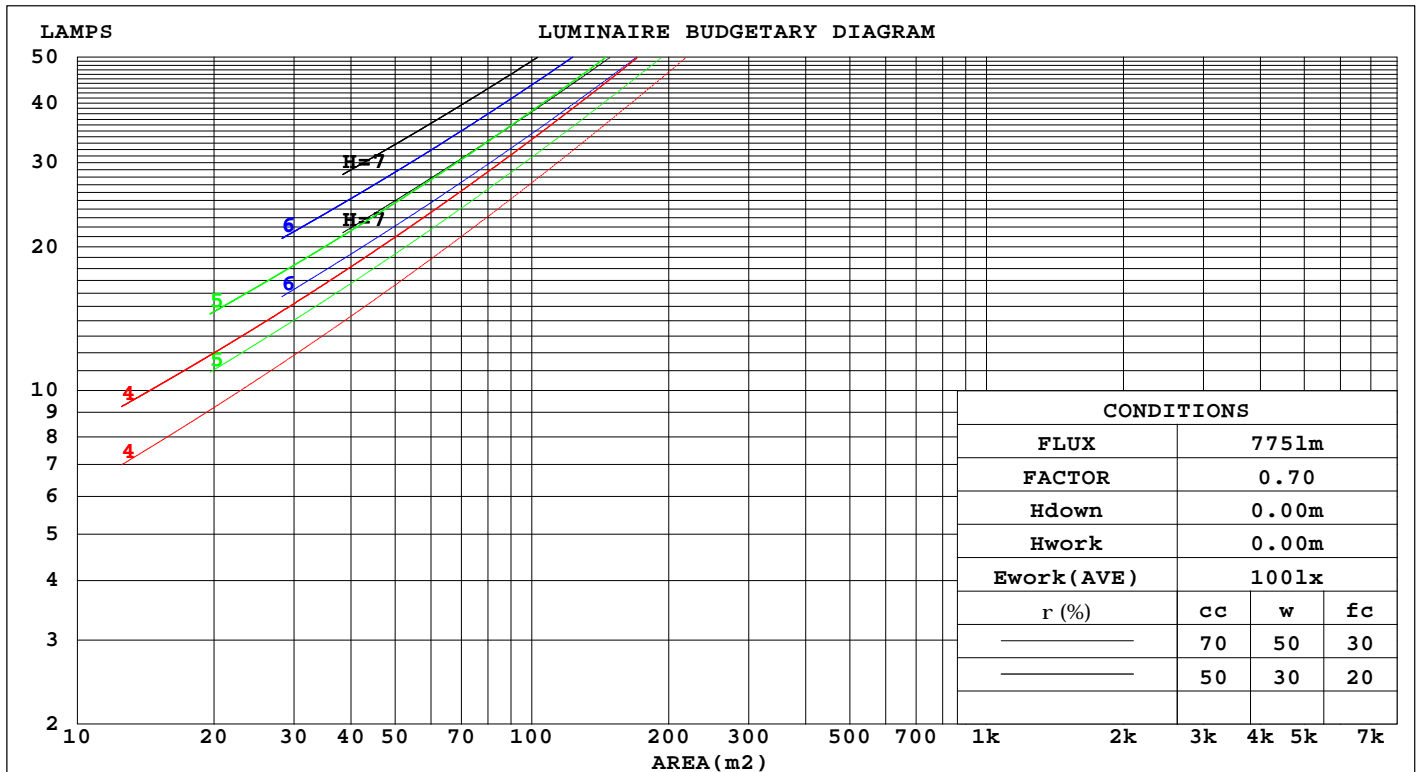


## CU AND LUMINAIRE BUDGETARY ESTIMATE DIAGRAM

Report number:

MANUFACTURER:			
Address:			
NAME: 47-RS-5050-24-112-12-X-Y W		TYPE: LED Strip	WEIGHT:
SPECIFICATION: 5050 112D	CCT(K): 2700	DIMENSION: 1M*0.012M	SERIAL No.: 20211130009

rcc	80%			70%			50%			30%			10%			0
rw	50%	30%	10%	50%	30%	10%	50%	30%	10%	50%	30%	10%	50%	30%	10%	0
r fc	20%			20%			20%			20%			20%			0
RCR	RCR:Room Cavity Ratio						Coefficients of Utilization(CU)									
0.0	1.18	1.18	1.18	1.15	1.15	1.15	1.09	1.09	1.09	1.03	1.03	1.03	.98	.98	.98	.96
1.0	1.02	.98	.94	.99	.95	.92	.94	.91	.88	.90	.87	.84	.85	.83	.81	.79
2.0	.89	.82	.76	.86	.80	.74	.82	.77	.72	.78	.74	.70	.75	.71	.68	.65
3.0	.78	.69	.63	.76	.68	.62	.72	.66	.60	.69	.63	.59	.66	.61	.57	.55
4.0	.69	.60	.53	.67	.59	.52	.64	.57	.51	.61	.55	.50	.58	.53	.49	.46
5.0	.61	.52	.45	.60	.51	.45	.57	.50	.44	.55	.48	.43	.52	.47	.42	.40
6.0	.55	.46	.39	.54	.45	.39	.52	.44	.38	.49	.43	.38	.47	.42	.37	.35
7.0	.50	.41	.35	.49	.40	.34	.47	.39	.34	.45	.38	.33	.43	.37	.33	.31
8.0	.45	.37	.31	.44	.36	.31	.43	.35	.30	.41	.35	.30	.40	.34	.29	.27
9.0	.42	.33	.28	.41	.33	.28	.39	.32	.27	.38	.31	.27	.37	.31	.26	.25
10.0	.38	.30	.25	.38	.30	.25	.36	.29	.25	.35	.29	.24	.34	.28	.24	.22



Test System:HOPOO HPG1800  
 Temperature:25.3DEG  
 Operators:  
 Test Date:2021年11月30日

Test Set: 8.0deg/s C-Gamma (TYPE C)  
 Humidity:65.0%  
 Test Distance:8.800 m  
 Remarks:

# GONIOPHOTOMETERS SYSTEM TEST REPORT

## WEC AND CCEC

Report number:

MANUFACTURER:											
Address:											
NAME: 47-RS-5050-24-112-12-X-Y W						TYPE: LED Strip			WEIGHT:		
SPECIFICATION: 5050 112D			CCT(K): 2700			DIMENSION: 1M*0.012M			SERIAL No.: 20211130009		

rcc	80%			70%			50%			30%			10%			0	
rw	50%	30%	10%	50%	30%	10%	50%	30%	10%	50%	30%	10%	50%	30%	10%	0	
rfc	20%			20%			20%			20%			20%			0	
RCR	RCR:Room Cavity Ratio						Wall Exitance Coefficients(WEC)										
0.0																	
1.0	.324	.184	.058	.316	.180	.057	.300	.172	.055	.285	.165	.053	.272	.158	.051		
2.0	.299	.164	.050	.292	.161	.049	.278	.154	.048	.265	.148	.046	.253	.143	.045		
3.0	.274	.146	.044	.268	.143	.043	.255	.138	.042	.244	.134	.041	.233	.129	.040		
4.0	.252	.131	.039	.246	.129	.038	.235	.125	.037	.225	.121	.036	.215	.117	.036		
5.0	.232	.118	.034	.227	.117	.034	.217	.113	.033	.208	.110	.033	.199	.106	.032		
6.0	.215	.108	.031	.210	.106	.031	.201	.103	.030	.193	.100	.029	.185	.097	.029		
7.0	.200	.099	.028	.196	.097	.028	.187	.095	.027	.180	.092	.027	.173	.090	.026		
8.0	.186	.091	.026	.183	.090	.025	.175	.088	.025	.168	.085	.025	.162	.083	.024		
9.0	.175	.084	.024	.171	.083	.023	.164	.081	.023	.158	.079	.023	.152	.077	.022		
10.0	.164	.079	.022	.161	.078	.022	.155	.076	.021	.149	.074	.021	.144	.072	.021		

rcc	80%			70%			50%			30%			10%			0	
rw	50%	30%	10%	50%	30%	10%	50%	30%	10%	50%	30%	10%	50%	30%	10%	0	
rfc	20%			20%			20%			20%			20%			0	
RCR	RCR:Room Cavity Ratio						Ceiling Cavity Exitance Coefficients(CCEC)										
0.0	.223	.223	.223	.191	.191	.191	.130	.130	.130	.075	.075	.075	.024	.024	.024		
1.0	.214	.189	.166	.183	.162	.143	.125	.112	.099	.072	.065	.058	.023	.021	.019		
2.0	.206	.165	.130	.177	.142	.113	.121	.098	.079	.070	.057	.046	.022	.018	.015		
3.0	.199	.148	.107	.170	.127	.093	.117	.088	.065	.068	.052	.038	.022	.017	.013		
4.0	.191	.135	.091	.164	.116	.079	.113	.081	.056	.065	.047	.033	.021	.015	.011		
5.0	.184	.124	.080	.158	.108	.070	.109	.075	.049	.063	.044	.029	.020	.014	.010		
6.0	.176	.116	.073	.152	.100	.063	.105	.070	.045	.061	.041	.027	.020	.014	.009		
7.0	.170	.109	.067	.146	.095	.058	.101	.066	.041	.059	.039	.025	.019	.013	.008		
8.0	.163	.103	.062	.140	.090	.054	.097	.063	.039	.057	.037	.023	.018	.012	.008		
9.0	.157	.099	.059	.135	.086	.052	.094	.060	.037	.055	.035	.022	.018	.012	.007		
10.0	.151	.094	.056	.130	.082	.049	.090	.058	.035	.053	.034	.021	.017	.011	.007		

Test System:HOPOO HPG1800  
 Temperature:25.3DEG  
 Operators:  
 Test Date:2021年11月30日

Test Set: 8.0deg/s C-Gamma (TYPE C)  
 Humidity:65.0%  
 Test Distance:8.800 m  
 Remarks:

# GONIOPHOTOMETERS SYSTEM TEST REPORT

## UGR Table

Report number:

MANUFACTURER:											
Address:											
NAME: 47-RS-5050-24-112-12-X-Y W					TYPE: LED Strip			WEIGHT:			
SPECIFICATION: 5050 112D		CCT(K): 2700			DIMENSION: 1M*0.012M			SERIAL No.: 20211130009			
ceiling/cavity	0.7	0.7	0.5	0.5	0.3	0.7	0.7	0.5	0.5	0.3	
walls	0.5	0.3	0.5	0.3	0.3	0.5	0.3	0.5	0.3	0.3	
working plane	0.2	0.2	0.2	0.2	0.2	0.2	0.2	0.2	0.2	0.2	
Room dimensions		Viewed crosswise				Viewed endwise					
x = 2H y = 2H	2H	16.3	17.8	16.7	18.1	18.4	17.0	18.5	17.4	18.8	19.1
	3H	18.0	19.3	18.3	19.6	20.0	19.3	20.7	19.6	21.0	21.3
	4H	18.6	19.9	18.9	20.2	20.5	20.4	21.7	20.8	22.0	22.4
	6H	18.9	20.1	19.3	20.5	20.9	21.6	22.8	22.0	23.1	23.5
	8H	19.0	20.1	19.4	20.5	20.9	22.1	23.3	22.6	23.7	24.1
	12H	18.9	20.1	19.4	20.5	20.8	22.8	23.9	23.2	24.3	24.7
4H	2H	17.0	18.3	17.3	18.6	18.9	17.5	18.8	17.9	19.2	19.5
	3H	18.8	19.9	19.2	20.3	20.7	19.9	21.1	20.4	21.4	21.8
	4H	19.5	20.6	20.0	21.0	21.4	21.2	22.3	21.7	22.7	23.1
	6H	20.0	20.9	20.5	21.4	21.8	22.5	23.5	23.0	23.9	24.4
	8H	20.1	21.0	20.6	21.4	21.9	23.2	24.1	23.7	24.5	25.0
	12H	20.1	20.9	20.6	21.4	21.9	24.0	24.8	24.5	25.3	25.8
8H	4H	19.9	20.8	20.4	21.2	21.7	21.4	22.3	21.9	22.7	23.2
	6H	20.6	21.3	21.1	21.8	22.3	22.9	23.7	23.4	24.1	24.7
	8H	20.8	21.4	21.3	21.9	22.4	23.8	24.4	24.3	24.9	25.5
	12H	20.9	21.4	21.4	21.9	22.5	24.7	25.3	25.3	25.8	26.4
12H	4H	20.0	20.8	20.5	21.3	21.8	21.4	22.2	21.9	22.7	23.2
	6H	20.7	21.4	21.3	21.9	22.4	23.0	23.6	23.5	24.1	24.7
	8H	21.0	21.5	21.5	22.1	22.6	23.9	24.4	24.4	24.9	25.5
Variations with the observer position at spacings:											
S = 1.0H	+ 0.1 / - 0.2					+ 0.1 / - 0.2					
1.5H	+ 0.2 / - 0.3					+ 0.2 / - 0.2					
2.0H	+ 0.2 / - 0.3					+ 0.2 / - 0.3					

CIE Pub.117 Corrected 774.7 lm Total Lamp Luminous Flux.(8log(F/F0) = -0.9)

Test System:HOPOO HPG1800  
 Temperature:25.3DEG  
 Operators:  
 Test Date:2021年11月30日

Test Set: 8.0deg/s C-Gamma (TYPE C)  
 Humidity:65.0%  
 Test Distance:8.800 m  
 Remarks:

## UTILIZATION FACTORS TABLE

Report number:

MANUFACTURER:			
Address:			
NAME: 47-RS-5050-24-112-12-X-Y W		TYPE: LED Strip	WEIGHT:
SPECIFICATION: 5050 112D	CCT(K): 2700	DIMENSION: 1M*0.012M	SERIAL No.: 20211130009

REFLECTANCE										
Ceiling	0.8	0.8	0.8	0.7	0.7	0.7	0.5	0.5	0.5	0
Walls	0.7	0.5	0.3	0.7	0.5	0.3	0.7	0.5	0.3	0
Working plane	0.2	0.2	0.2	0.2	0.2	0.2	0.2	0.2	0.2	0
ROOM INDEX	UTILIZATION FACTORS(PERCENT) $k(RI) \times RCR = 5$									
$k = 0.60$	55	44	37	55	43	36	53	43	36	30
0.80	65	53	46	64	53	46	62	52	45	38
1.00	74	62	55	72	61	54	70	63	54	46
1.25	81	70	62	79	69	62	76	67	61	53
1.50	86	75	68	84	74	67	80	72	66	58
2.00	93	84	77	90	82	76	86	79	74	65
2.50	97	88	82	94	87	81	90	84	79	69
3.00	100	93	87	98	91	85	93	87	83	73
4.00	104	98	93	101	96	91	97	92	88	78
5.00	107	101	97	104	99	95	99	95	92	81
ROOM INDEX	UF(total)									Direct
According to DIN EN 13032-2 2004			Suspended					SHRNOM = 1.25		

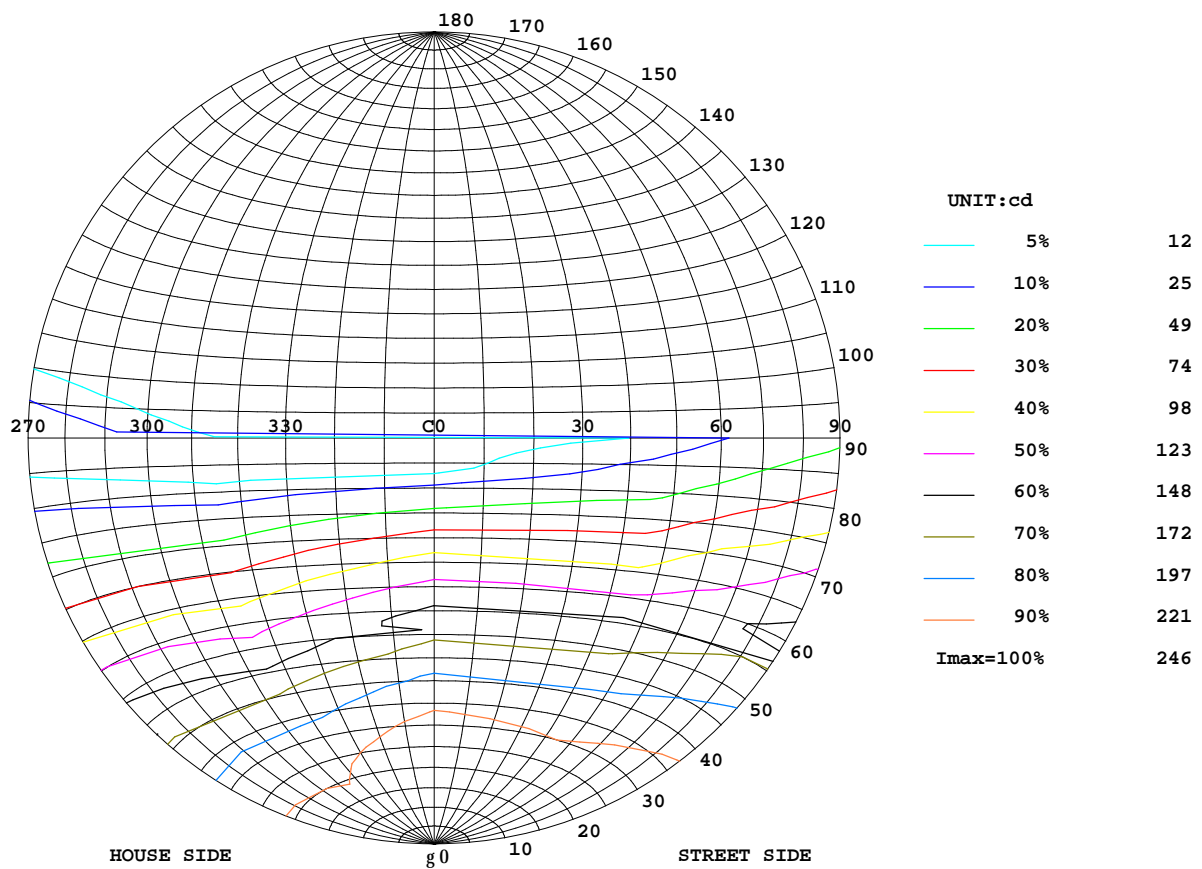
Test System:HOPOO HPG1800  
 Temperature:25.3DEG  
 Operators:  
 Test Date:2021年11月30日

Test Set: 8.0deg/s C-Gamma (TYPE C)  
 Humidity:65.0%  
 Test Distance:8.800 m  
 Remarks:

## ISOCANDELA DIAGRAM

Report number:

MANUFACTURER:			
Address:			
NAME: 47-RS-5050-24-112-12-X-Y W		TYPE: LED Strip	WEIGHT:
SPECIFICATION: 5050 112D	CCT(K): 2700	DIMENSION: 1M*0.012M	SERIAL No.: 20211130009



Test System:HOPOO HPG1800  
Temperature:25.3DEG  
Operators:  
Test Date:2021年11月30日

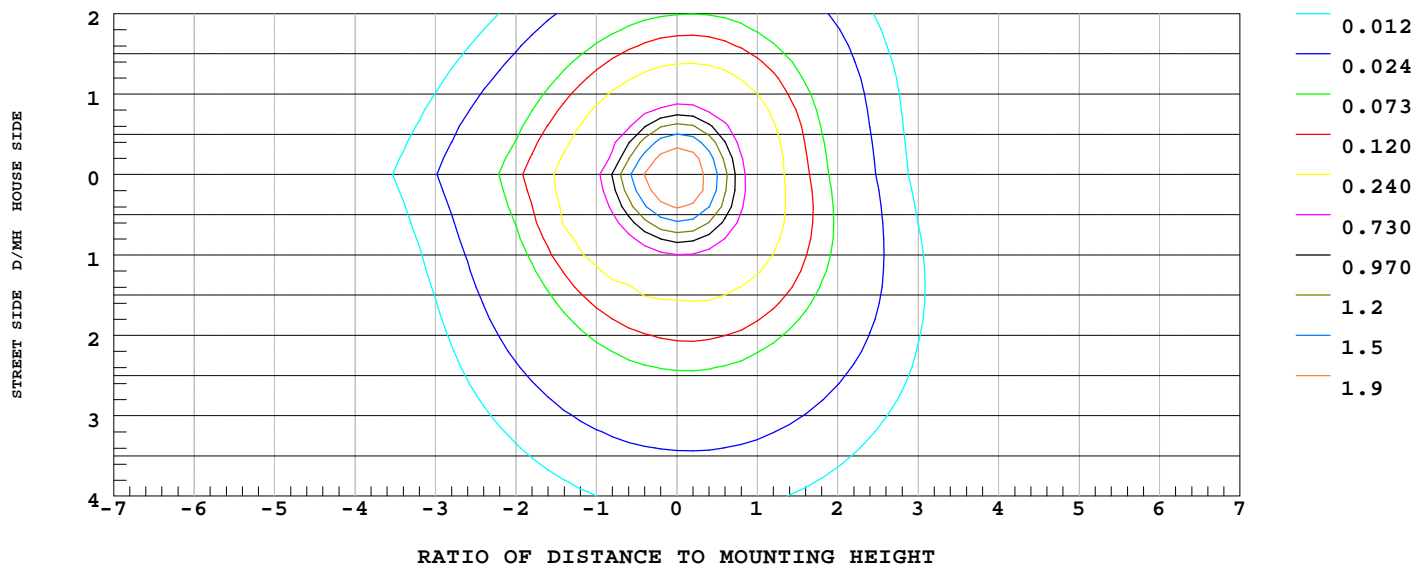
Test Set: 8.0deg/s C-Gamma (TYPE C)  
Humidity:65.0%  
Test Distance:8.800 m  
Remarks:

## ISOLUX DIAGRAM

Report number:

MANUFACTURER:			
Address:			
NAME: 47-RS-5050-24-112-12-X-Y W		TYPE: LED Strip	WEIGHT:
SPECIFICATION: 5050 112D	CCT(K): 2700	DIMENSION: 1M*0.012M	SERIAL No.: 20211130009

ILLUMINANCE AT MH=10 m, Enadir = 2.43 lx



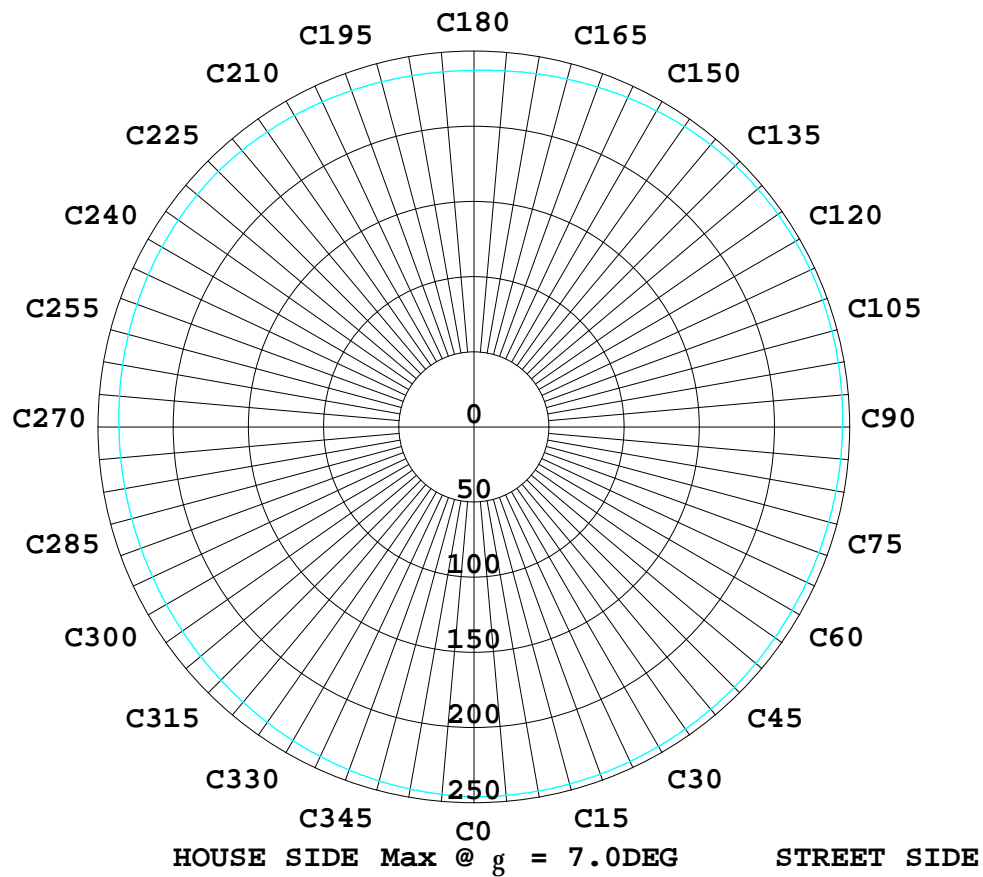
Test System: HOPOO HPG1800  
Temperature: 25.3 DEG  
Operators:  
Test Date: 2021年11月30日

Test Set: 8.0deg/s C-Gamma (TYPE C)  
Humidity: 65.0%  
Test Distance: 8.800 m  
Remarks:

## ISOCANDELA DIAGRAM

Report number:

MANUFACTURER:			
Address:			
NAME: 47-RS-5050-24-112-12-X-Y W		TYPE: LED Strip	WEIGHT:
SPECIFICATION: 5050 112D	CCT(K): 2700	DIMENSION: 1M*0.012M	SERIAL No.: 20211130009



Test System: HOPOO HPG1800  
Temperature: 25.3DEG  
Operators:  
Test Date: 2021年11月30日

Test Set: 8.0deg/s C-Gamma (TYPE C)  
Humidity: 65.0%  
Test Distance: 8.800 m  
Remarks: