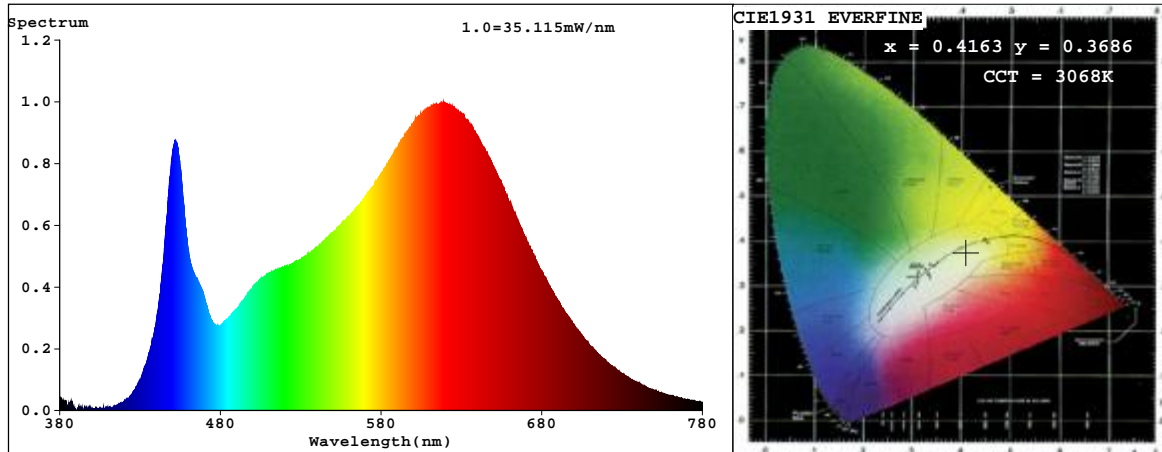


Spectrum Test Report



Color Parameters:

Chromaticity Coordinate: $x=0.4163$ $y=0.3686$ / $u'=0.2527$ $v'=0.5034$
 CCT=3068K(Duv=-0.0120) Dominant WL:Ld =588.6nm Purity=35.5%
 Ratio:R=25.0% G=71.2% B=3.7% Peak WL:Lp=619.0nm FWHM=142.0nm
 Render Index:Ra=92.3
 R1 =97 R2 =96 R3 =93 R4 =94 R5 =98 R6 =91 R7 =87
 R8 =82 R9 =68 R10=93 R11=95 R12=83 R13=98 R14=97 R15=96

Photo Parameters:

Flux = 1678 lm Eff. : 120.39 lm/W Fe = 6.032 W
 Scotopic:2617.9 S/P:1.5598
 Photosynthetic:PPF:27.561umol/s PRF:5719.7mW(400-700nm)

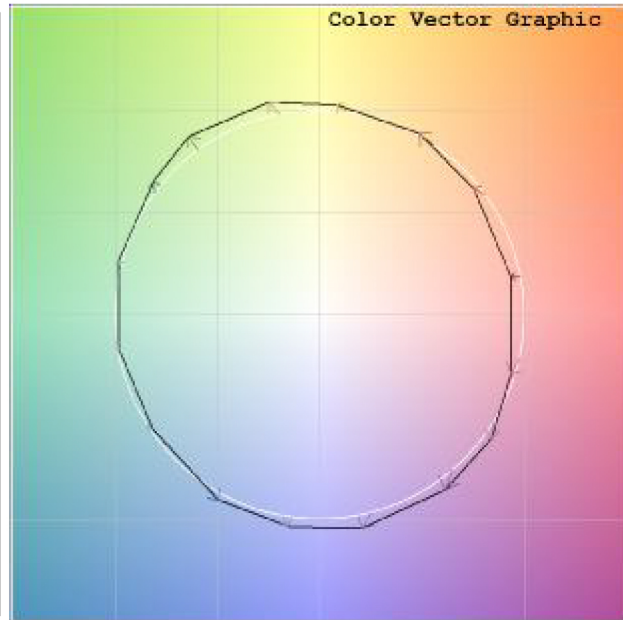
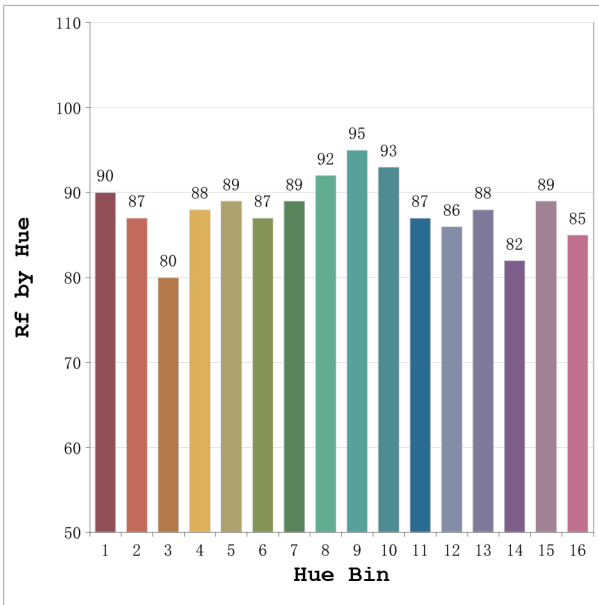
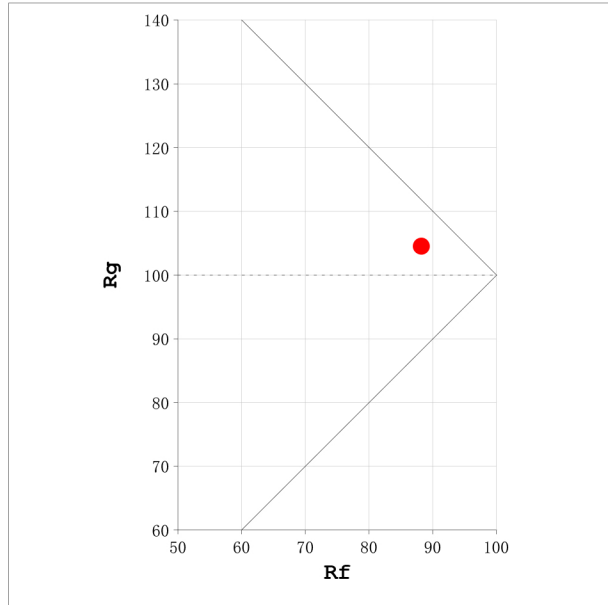
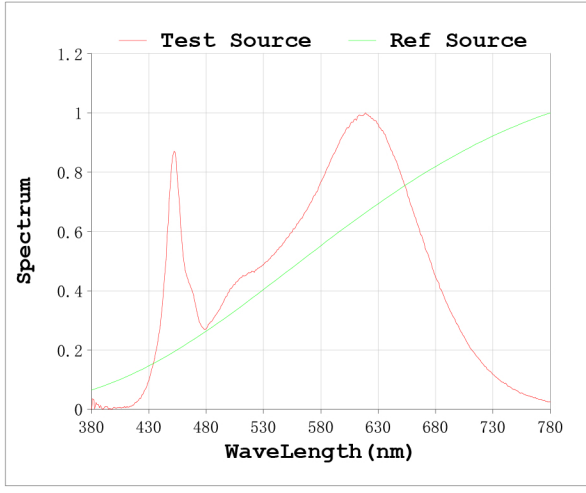
Electrical parameters:

V = 23.998 V I = 0.5809 A P = 13.94 W PF = 1.000
 LEVEL:OUT WHITE:OUT

Status: Integral T = 124 ms Ip = 41543 (63%)

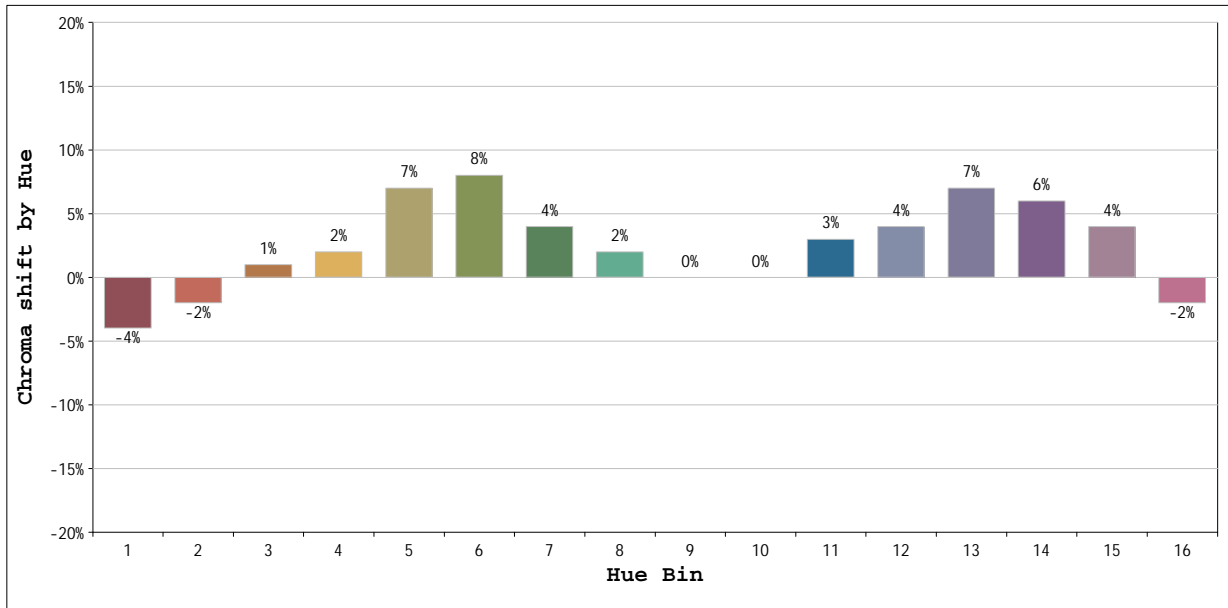
Model:2835 160D 24V 14.4W 3000K Number:4
 Tester: Date:2019-10-10
 Temperature:26DegDeg Humidity:65%
 Manufacturer:Unitop Remarks:82R

Rf: 88 CCT: 3068 K u': 0.2527
 Rg: 104 Duv: -0.0120 v': 0.5034



Model:2835 160D 24V 14.4W 3000K
 Tester:
 Temperature:26DegDeg
 Manufacturer:

Number:4
 Date:2019-10-10
 Humidity:65%%
 Remarks:82R



Hue Bin	Hue Angle	Rf	Graphic shift(%)	
			Chroma	Hue
1	0.0° - 22.5°	90	-4	0
2	22.5° - 45.0°	87	-2	5
3	45.0° - 67.5°	80	1	9
4	67.5° - 90.0°	88	2	5
5	90.0° - 112.5°	89	7	4
6	112.5° - 135.0°	87	8	0
7	135.0° - 157.5°	89	4	-4
8	157.5° - 180.0°	92	2	-3
9	180.0° - 202.5°	95	0	0
10	202.5° - 225.0°	93	0	3
11	225.0° - 247.5°	87	3	8
12	247.5° - 270.0°	86	4	4
13	270.0° - 292.5°	88	7	-5
14	292.5° - 315.0°	82	6	-7
15	315.0° - 337.5°	89	4	-6
16	337.5° - 360.0°	85	-2	-8

Model:2835 160D 24V 14.4W 3000K **Number:**4
Tester: **Date:**2019-10-10
Temperature:26DegDeg **Humidity:**65%
Manufacturer:Unitop **Remarks:**82R